

Anti-SUB1 / PC4 antibody



Catalog Number: 104743

Product name

Anti-SUB1 / PC4 antibody

Immunogen

[Human SUB1 / PC4 \(His Tag\) recombinant protein](#)

Specificity

Human SUB1 / PC4

Antibody description

Rabbit polyclonal to SUB1 / PC4

Preparation

Produced in rabbits immunized with purified, recombinant Human SUB1 / PC4 (rh SUB1 / PC4; P53999; Met1-Leu127). SUB1 / PC4 specific IgG was purified by Human SUB1 / PC4 affinity chromatography.

Formulation

0.2 µm filtered solution in PBS

Storage

This antibody can be stored at 2°C-8°C for one month without detectable loss of activity. Antibody products are stable for twelve months from date of receipt when stored at -20°C to -80°C.

Preservative-Free.

Sodium azide is recommended to avoid contamination (final concentration 0.05%-0.1%). It is toxic to cells and should be disposed of properly. Avoid repeated freeze-thaw cycles.

Clonality

Polyclonal

Ig Type

Rabbit IgG

Applications

ELISA, WB, IP

Dilutions

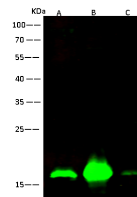
WB: 0.5-10 µg/ml

ELISA: 0.1-0.2 µg/mL

This antibody can be used at 0.1-0.2 µg/mL with the appropriate secondary reagents to detect Human SUB1 / PC4. The detection limit for Human SUB1 / PC4 is < 0.039 ng/well.

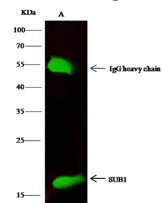
IP: 1-4 µg/mg of lysate

Validations



Items \ Lanes	A	B	C
Sample (whole cell lysate)	NIH3T3	HeLa	PC12
Sample volume (µg/lane)	30	30	30
Gel	13% SDS-PAGE reducing gel		
Recommended concentration	0.5-10 µg/ml		
Secondary Antibody	Dylight 800 labeled Antibody to Rabbit IgG (H+L), at 1:5000 dilution.		
Explanation	Developed using Odyssey imaging system. Predicted band size: 14 kDa Observed band size: 17 kDa		

SUB1 / PC4 Antibody, Rabbit PAb, Antigen Affinity



Items \ Lanes	A
Sample (whole cell lysate)	HeLa
Sample quantity	0.5 mg
IP antibody quantity	2 µg
Protein G agarose	15 µl of 50% Protein G Agarose
Gel	13% SDS-PAGE reducing gel
Primary antibody	His-SUB1 antibody at 5 µg/ml
Secondary antibody	Dylight 800 labeled antibody to rabbit IgG (H+L), at 1:5000 dilution.

Purified, Western blot

SUB1 / PC4 Antibody, Rabbit PAb, Antigen Affinity

Purified, Immunoprecipitation