

# PCNA antibody

Catalog Number: 113743

## Product name

PCNA antibody

## Specificity

Human, Mouse, Rat, Zebrafish; other species not tested.

## Antibody description

PCNA Rabbit Polyclonal antibody. Positive IHC detected in human breast cancer tissue, human stomach cancer tissue. Positive IF detected in HepG2 cells. Positive FC detected in HEK-293T cells. Positive WB detected in MCF7 cells, A431 cells, HEK-293 cells, HeLa cells, HepG2 cells, Jurkat cells, mouse liver tissue, mouse testis tissue, NIH/3T3 cells, Raji cells, rat liver tissue, rat testis tissue. Positive IP detected in MCF-7 cells. Observed molecular weight by Western-blot: 36-38 kDa

## Preparation

This antibody was obtained by immunization of PCNA recombinant protein (Accession Number: NM\_002592). Purification method: Antigen affinity purified.

## Formulation

PBS with 0.1% sodium azide and 50% glycerol pH 7.3.

## Storage

Store at -20°C. DO NOT ALIQUOT

## Clonality

Polyclonal

## Ig Type

Rabbit IgG

## Applications

ELISA, IF, IP, WB, IHC, FC

## Dilutions

Recommended Dilution:

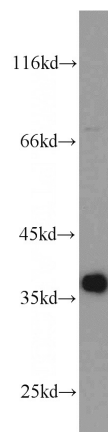
WB: 1:1000-1:10000

IP: 1:500-1:5000

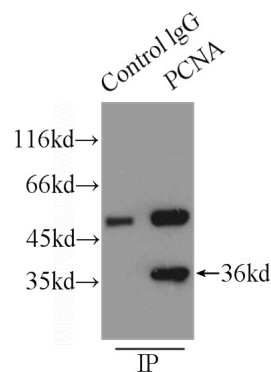
IHC: 1:20-1:200

IF: 1:20-1:200

## Validations



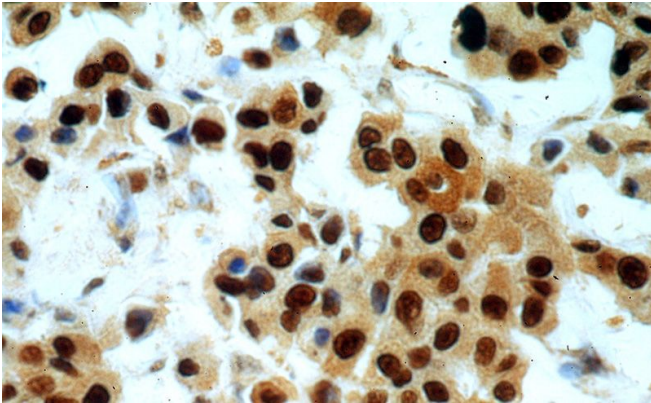
MCF7 cells were subjected to SDS PAGE followed by western blot with Catalog No:117336(PCNA antibody) at dilution of 1:2000



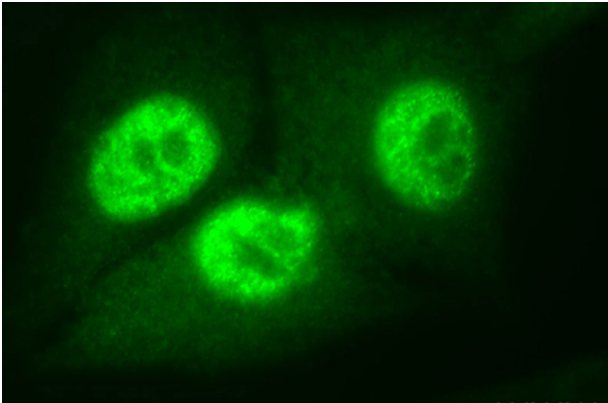
IP Result of anti-PCNA (IP:Catalog No:117336, 3ug; Detection:Catalog No:117336 1:1500) with MCF-7 cells lysate 2500ug.

# PCNA antibody

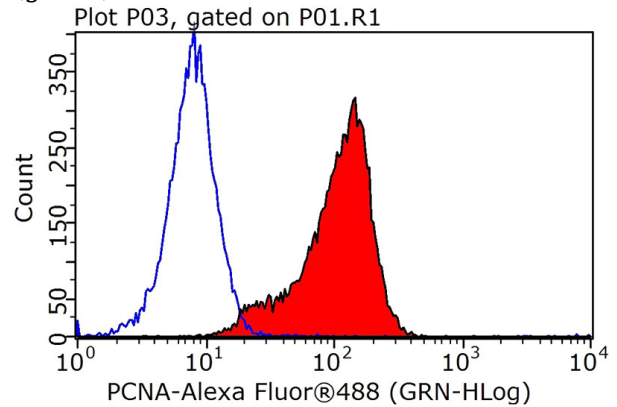
Catalog Number: 113743



Immunohistochemical of paraffin-embedded human breast cancer using Catalog No:117336(PCNA antibody) at dilution of 1:50 (under 40x lens)



Immunofluorescent analysis of HepG2 cells, using PCNA antibody Catalog No:117336 at 1:50 dilution and FITC-labeled donkey anti-rabbit IgG (green).



1X10<sup>6</sup> HEK-293T cells were stained with .2ug PCNA antibody (Catalog No:117336, red) and control antibody (blue). Fixed with 90% MeOH blocked with 3% BSA (30 min). Alexa Fluor 488-conjugated AffiniPure Goat Anti-Rabbit IgG(H+L) with dilution 1:1000.