

Anti-Ctip2 Rabbit antibody



Catalog Number: 167343

Product name

Anti-Ctip2 Rabbit antibody

Specificity

Human

Antibody description

Ctip2 Rabbit polyclonal antibody

Preparation

Antigen: A synthetic peptide of human Ctip2

Formulation

Supplied in 50nM Tris-Glycine(pH 7.4), 0.15M NaCl, 40%Glycerol, 0.01% sodium azide and 0.05% BSA.

Storage

Store at -20°C. Stable for 12 months from date of receipt.

Clonality

Polyclonal

Ig Type

Rabbit IgG

Applications

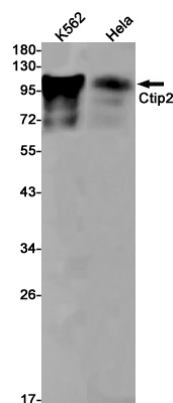
WB, FC

Dilutions

WB: 1/2000-1/10000

FC: 1/20

Validations



Western blot detection of Ctip2 in K562, HeLa cell lysates using Ctip2 Rabbit pAb(1:1000 diluted). Predicted band size: 96kDa. Observed band size: 120-130kDa.