

RGS16 antibody



Catalog Number: 114643

Product name

RGS16 antibody

IP: 1:200-1:1000

IF: 1:10-1:100

Specificity

Human; other species not tested.

Antibody description

RGS16 Rabbit Polyclonal antibody. Positive WB detected in Y79 cells, COLO 320 cells, HepG2 cells. Positive IP detected in HepG2 cells. Positive IF detected in HepG2 cells. Observed molecular weight by Western-blot: 45 kDa

Preparation

This antibody was obtained by immunization of RGS16 recombinant protein (Accession Number: NM_002928). Purification method: Antigen affinity purified.

Formulation

PBS with 0.1% sodium azide and 50% glycerol pH 7.3.

Storage

Store at -20°C. DO NOT ALIQUOT

Clonality

Polyclonal

Ig Type

Rabbit IgG

Applications

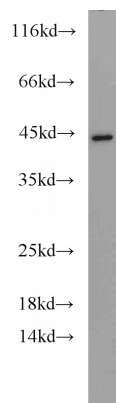
ELISA, WB, IF, IP

Dilutions

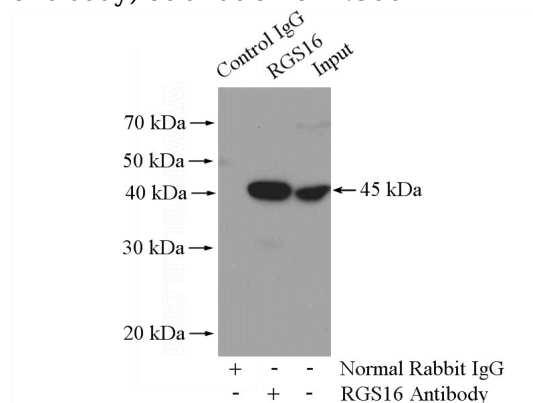
Recommended Dilution:

WB: 1:200-1:2000

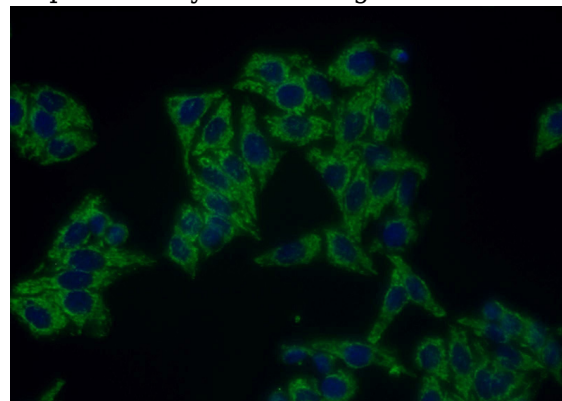
Validations



Y79 cells were subjected to SDS PAGE followed by western blot with Catalog No:114643(RGS16 antibody) at dilution of 1:500



IP Result of anti-RGS16 (IP:Catalog No:114643, 4ug; Detection:Catalog No:114643 1:300) with HepG2 cells lysate 3200ug.



Immunofluorescent analysis of HepG2 cells using Catalog No:114643(RGS16 Antibody) at dilution of

RGS16 antibody



Catalog Number: 114643

1:25 and Alexa Fluor 488-conjugated AffiniPure

Goat Anti-Rabbit IgG(H+L)