

Rhesus HER3/ErbB3 (Fc Tag) recombinant protein



Catalog Number: 504643

General Information

Protein Construction

A DNA sequence encoding the Rhesus (*Macaca mulatta*) ErbB3 (XP_001113953.2) extracellular domain (Met 1-Thr 643) was fused with the Fc region of human IgG1 at the C-terminus.

Organism

Rhesus

Expression Host

Human Cells

QC Testing

Activity

1. Measured by its ability to human NRG1 (aa 20-241) (Cat:503907) in functional Elisa.
2. Measured by its ability to human NRG1 (aa 177-241) (Cat:503581) in functional Elisa.
3. Measured by its ability to human NRG1 (aa 20-241)-His (Cat:503946) in functional Elisa.

Purity

> 90 % as determined by SDS-PAGE

Endotoxin

< 1.0 EU per μg of the protein as determined by the LAL method

Stability

Samples are stable for up to twelve months from date of receipt at -70°C

Predicted N terminal

Ser 20

Molecular Mass

The recombinant Rhesus ErbB3/Fc is a disulfide-linked homodimeric protein. The reduced monomer consists of 865 amino acids and predicts a molecular mass of 95.7 kDa. As a result of glycosylation, rhesus ErbB3/Fc monomer migrates as an approximately 130-140 kDa band in SDS-PAGE under reducing conditions.

Formulation

Lyophilized from sterile PBS, pH 7.4

1. 5 % trehalose and mannitol are added as protectants before lyophilization.
2. Please contact us for any concerns or special requirements.

Usage Guide

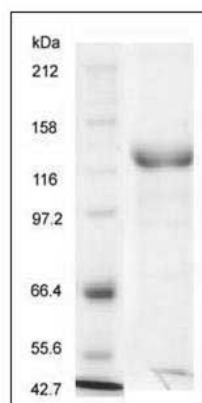
Storage

Store it under sterile conditions at -20°C to -80°C . It is recommended that the protein be aliquoted for optimal storage. Avoid repeated freeze-thaw cycles.

Reconstitution

Adding sterile water, prepare a stock solution of 0.25 mg/ml. Concentration is measured by UV-Vis.

SDS-PAGE



Rhesus HER3 / ErbB3 Protein (Fc Tag) SDS-PAGE