

PSMD5 antibody

Catalog Number: 114243

Product name

PSMD5 antibody

IP: 1:200-1:2000

IHC: 1:20-1:200

Specificity

Human, Mouse, Rat; other species not tested.

Antibody description

PSMD5 Rabbit Polyclonal antibody. Positive IHC detected in human prostate cancer tissue. Positive WB detected in mouse liver tissue, human liver tissue, Jurkat cells. Positive IP detected in mouse liver tissue. Observed molecular weight by Western-blot: 50 kDa

Preparation

This antibody was obtained by immunization of PSMD5 recombinant protein (Accession Number: NM_005047). Purification method: Antigen affinity purified.

Formulation

PBS with 0.1% sodium azide and 50% glycerol pH 7.3.

Storage

Store at -20°C. DO NOT ALIQUOT

Clonality

Polyclonal

Ig Type

Rabbit IgG

Applications

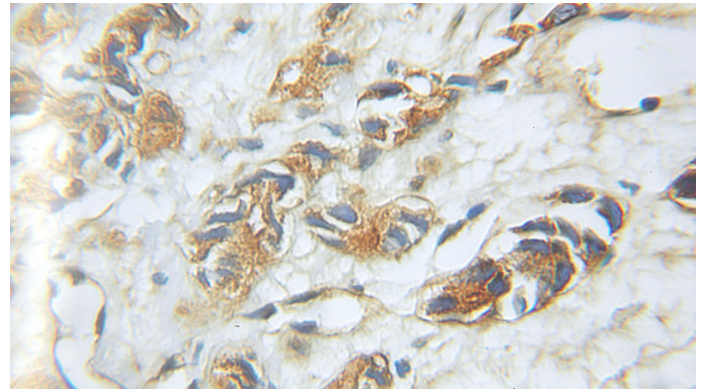
ELISA, IHC, IP, WB

Dilutions

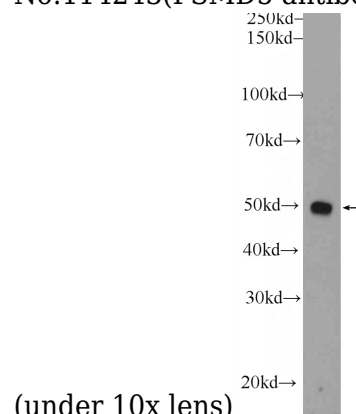
Recommended Dilution:

WB: 1:500-1:5000

Validations

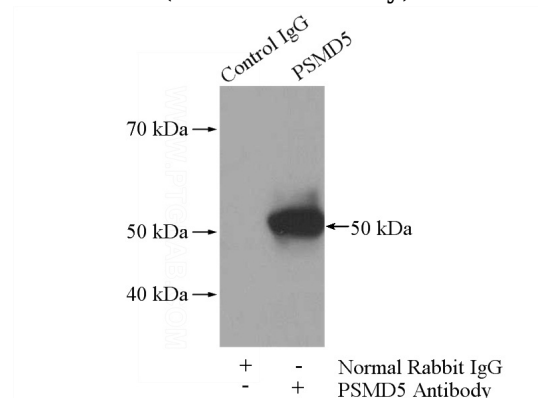


Immunohistochemical of paraffin-embedded human prostate cancer using Catalog No:114243(PSMD5 antibody) at dilution of 1:100



(under 10x lens)

mouse liver tissue were subjected to SDS PAGE followed by western blot with Catalog No:114243(PSMD5 Antibody) at dilution of 1:1000



IP Result of anti-PSMD5 (IP:Catalog No:114243, 4ug; Detection:Catalog No:114243 1:800) with

PSMD5 antibody



Catalog Number: 114243

mouse liver tissue lysate 4000ug.