

Anti-KLK1 antibody



Catalog Number: 142243

Product name

Anti-KLK1 antibody

Immunogen

[Human KLK1/Kallikrein 1 \(His Tag\) recombinant protein](#)

Specificity

Human KLK1 / Kallikrein 1

Antibody description

Rabbit Polyclonal to Human KLK1

Preparation

Produced in rabbits immunized with purified, recombinant Human KLK1 / Kallikrein 1 . KLK1 / Kallikrein 1 specific IgG was purified by Human KLK1 / Kallikrein 1 affinity chromatography.

Formulation

0.2 µm filtered solution in PBS

Storage

This antibody can be stored at 2°C-8°C for one month without detectable loss of activity. Antibody products are stable for twelve months from date of receipt when stored at -20°C to -80°C.

Preservative-Free.

Sodium azide is recommended to avoid contamination (final concentration 0.05%-0.1%). It is toxic to cells and should be disposed of

properly. Avoid repeated freeze-thaw cycles.

Clonality

Polyclonal

Ig Type

Rabbit IgG

Applications

WB, ELISA

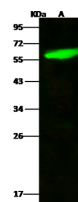
Dilutions

WB: 1-5 µg/ml

ELISA: 0.1-0.2 µg/ml

This antibody can be used at 0.1-0.2 µg/ml with the appropriate secondary reagents to detect Human KLK1 / Kallikrein 1.

Validations



Items	Lanes
Sample (whole cell lysate)	A
Sample Volume (µg/lane)	U87MG 30
Gel	13% SDS-PAGE reducing gel
Recommended Concentration	1-5 µg/ml
Secondary Antibody	Dylight 800-labeled Antibody To Rabbit IgG (1+1), at 1:5000 dilution.
Developed using Odyssey imaging system.	
Explanation	Predicted band size : 29 kDa Observed band size : 59 kDa

KLK1 / Kallikrein 1 Antibody, Rabbit PAb, Antigen Affinity Purified, Western blot