

# Anti-KRT20/Cytokeratin20 antibody



Catalog Number: 101243

## Product name

Anti-KRT20/Cytokeratin20 antibody

## Specificity

Human KRT20

## Antibody description

Rabbit polyclonal to KRT20/Cytokeratin20

## Preparation

Produced in rabbits immunized with a synthetic peptide corresponding to the N-terminus of the human KRT20, and purified by antigen affinity chromatography.

## Formulation

0.2 µm filtered solution in PBS with 5% trehalose

## Storage

This antibody can be stored at 2°C-8°C for one month without detectable loss of activity. Antibody products are stable for twelve months from date of receipt when stored at -20°C to -80°C.

Preservative-Free.

Sodium azide is recommended to avoid contamination (final concentration 0.05%-0.1%). It is toxic to cells and should be disposed of

properly. Avoid repeated freeze-thaw cycles.

## Clonality

Polyclonal

## Ig Type

Rabbit IgG

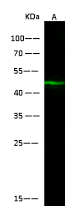
## Applications

WB

## Dilutions

WB: 10-50 µg/ml

## Validations



Items	Lanes
Sample (whole cell lysate)	A Hela
Sample Volume (µg/lane)	30
Gel	13% SDS-PAGE reducing gel
Recommended Concentration	10-50 µg/ml
Secondary Antibody	Dylight 800-labeled Antibody To Rabbit IgG (H+L), at 1:5000 dilution.
Developed using Odyssey imaging system.	
Explanation	Predicted band size : 48 kDa Observed band size : 46 kDa

KRT20 Antibody, Rabbit PAb, Antigen Affinity Purified, Western blot