

# EML4 antibody



Catalog Number: 110243

## Product name

EML4 antibody

## Immunogen

[Human EML4 Recombinant protein \(GST tag\)](#)

## Specificity

Human; other species not tested.

## Antibody description

EML4 Rabbit Polyclonal antibody. Positive IP detected in A549 cells. Positive WB detected in A549 cells, A431 cells, HeLa cells. Positive IF detected in A549 cells. Observed molecular weight by Western-blot: 120 kDa

## Preparation

This antibody was obtained by immunization of EML4 recombinant protein (Accession Number: NM\_019063). Purification method: Antigen Affinity purified.

## Formulation

PBS with 0.02% sodium azide and 50% glycerol pH 7.3.

## Storage

Store at -20°C. DO NOT ALIQUOT

## Clonality

Polyclonal

## Ig Type

Rabbit IgG

## Applications

ELISA, WB, IF, IP

## Dilutions

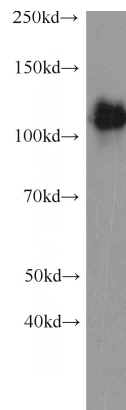
Recommended Dilution:

WB: 1:500-1:5000

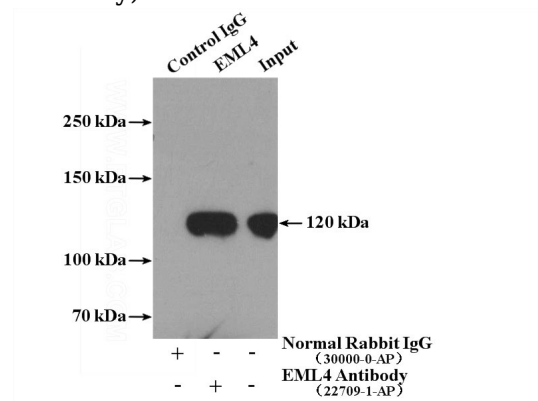
IP: 1:1000-1:10000

IF: 1:20-1:200

## Validations



A549 cells were subjected to SDS PAGE followed by western blot with Catalog No:110243(EML4 antibody) at dilution of 1:2000



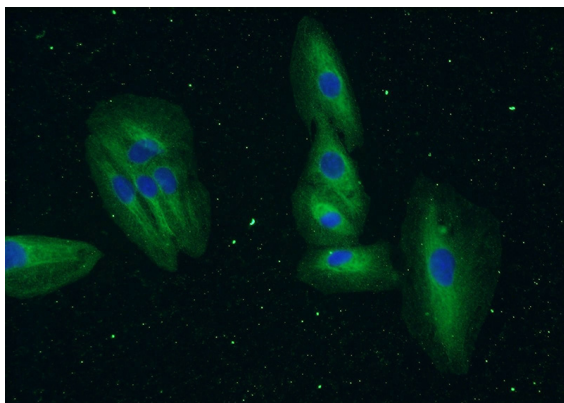
IP Result of anti-EML4 (IP:Catalog No:110243, 4ug; Detection:Catalog No:110243 1:2000) with A549 cells lysate 400ug.

# EML4 antibody



Catalog Number: 110243

---



Immunofluorescent analysis of A549 cells using Catalog No:110243(EML4 Antibody) at dilution of 1:50 and Alexa Fluor 488-conjugated AffiniPure Goat Anti-Rabbit IgG(H+L)