

Anti-Phospho-v-Myb + c-Myb (Ser11) Rabbit antibody



Catalog Number: 168943

Product name

Rabbit IgG

Anti-Phospho-v-Myb + c-Myb (Ser11) Rabbit antibody

Applications

WB, IHC-P, ICC/IF, IP, ChIP

Specificity

Human

Dilutions

WB: 1/1000

Antibody description

Phospho-v-Myb + c-Myb (Ser11) Rabbit monoclonal antibody

IHC: 1/20

ICC/IF: 1/50

IP: 1/20

Preparation

Antigen: A synthetic phosphopeptide corresponding to residues surrounding Ser11 of human v-Myb/c-Myb

ChIP: 1/20

Validations

Formulation

50nM Tris-Glycine(pH 7.4), 0.15M NaCl, 40%Glycerol, 0.01% sodium azide and 0.05% BSA.

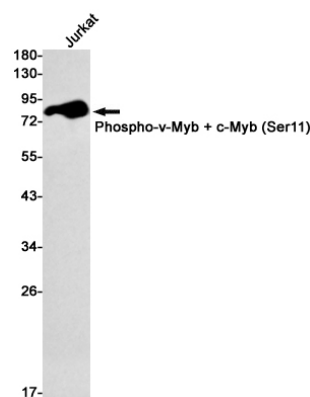
Storage

Store at 4°C short term. Store at -20°C long term. Avoid freeze / thaw cycle.

Clonality

Monoclonal

Ig Type



Western blot detection of Phospho-v-Myb + c-Myb (Ser11) in Jurkat cell lysates using Phospho-v-Myb + c-Myb (Ser11) Rabbit mAb(1:1000 diluted). Predicted band size: 72kDa. Observed band size: 80kDa.