

MYL3 antibody

Catalog Number: 112943

Product name

MYL3 antibody

Immunogen

[Human MYL3 Recombinant protein \(GST tag\)](#)

Specificity

Human, Mouse, Rat; other species not tested.

Antibody description

MYL3 Rabbit Polyclonal antibody. Positive IP detected in mouse heart tissue. Positive WB detected in mouse heart tissue, human heart tissue, mouse skeletal muscle tissue. Positive IHC detected in human heart tissue, human lung cancer tissue, human skeletal muscle tissue. Observed molecular weight by Western-blot: 22-27 kDa

Preparation

This antibody was obtained by immunization of MYL3 recombinant protein (Accession Number: NM_001406937). Purification method: Antigen affinity purified.

Formulation

PBS with 0.1% sodium azide and 50% glycerol pH 7.3.

Storage

Store at -20°C. DO NOT ALIQUOT

Clonality

Polyclonal

Ig Type

Rabbit IgG

Applications

ELISA, IHC, WB, IP

Dilutions

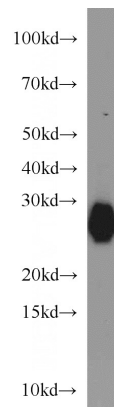
Recommended Dilution:

WB: 1:500-1:5000

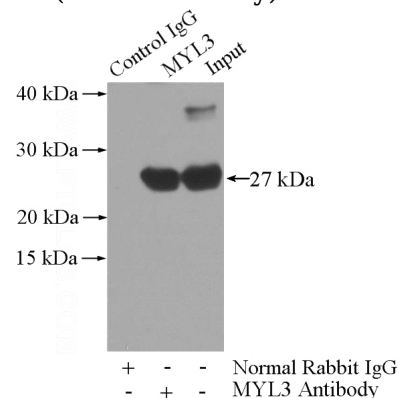
IP: 1:2000-1:20000

IHC: 1:20-1:200

Validations



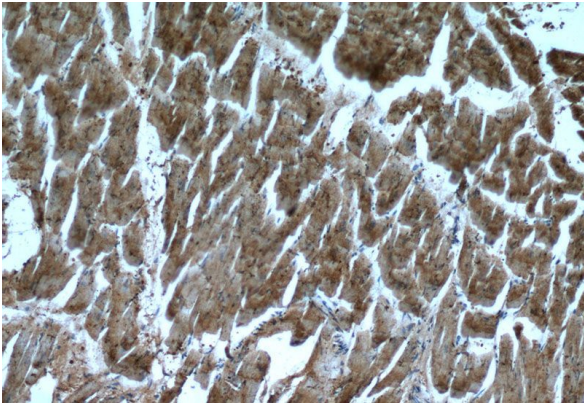
mouse heart tissue were subjected to SDS PAGE followed by western blot with Catalog No:112943(MYL3 antibody) at dilution of 1:1000



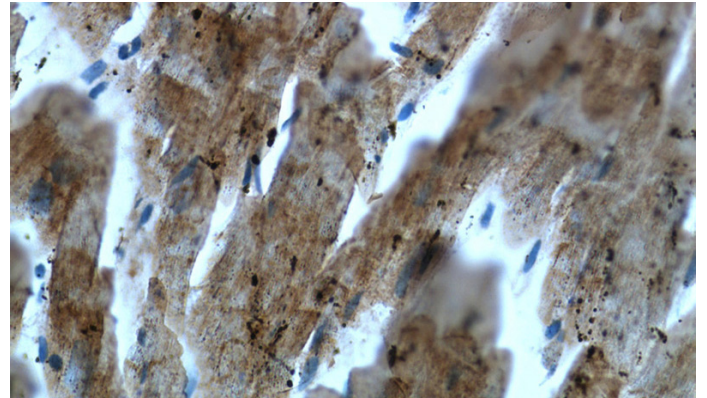
IP Result of anti-MYL3 (IP:Catalog No:112943, 3ug; Detection:Catalog No:112943 1:7000) with mouse heart tissue lysate 4000ug.

MYL3 antibody

Catalog Number: 112943



Immunohistochemistry of paraffin-embedded human heart tissue slide using Catalog No:112943(MYL3 Antibody) at dilution of 1:50 (under 10x lens)



Immunohistochemistry of paraffin-embedded human heart tissue slide using Catalog No:112943(MYL3 Antibody) at dilution of 1:50 (under 40x lens)