

# Anti-Phospho-Rb (Ser780) Rabbit antibody



Catalog Number: 167543

## Product name

Anti-Phospho-Rb (Ser780) Rabbit antibody

## Ig Type

Rabbit IgG

## Specificity

Human, Mouse

## Applications

WB, IP

## Antibody description

Phospho-Rb (Ser780) Rabbit polyclonal antibody

## Dilutions

WB: 1/1000

## Preparation

Antigen: A synthetic phosphopeptide corresponding to residues surrounding Ser780 of human Rb

IP: 1/20

## Formulation

Supplied in 50nM Tris-Glycine(pH 7.4), 0.15M NaCl, 40%Glycerol, 0.01% sodium azide and 0.05% BSA.

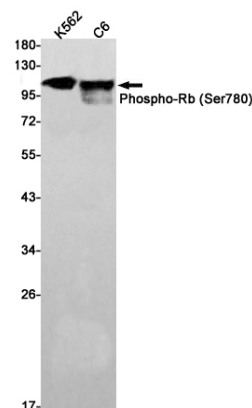
## Storage

Store at -20°C. Stable for 12 months from date of receipt.

## Clonality

Polyclonal

## Validations



Western blot detection of Phospho-Rb (Ser780) in K562, C6 cell lysates using Phospho-Rb (Ser780) Rabbit pAb(1:1000 diluted). Predicted band size: 106kDa. Observed band size: 110kDa.