

Anti-CBX3/HP1 gamma antibody



Catalog Number: 106543

Product name

Anti-CBX3/HP1 gamma antibody

WB: 1-10 µg/ml

Specificity

Human CBX3

ICC/IF: 0.5-1.5 µg/mL

IP: 1-4 µg/mg of lysate

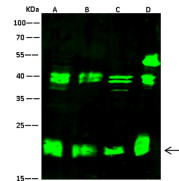
Antibody description

Rabbit polyclonal to CBX3/HP1 gamma

Validations

Preparation

Produced in rabbits immunized with a synthetic peptide corresponding to the center region of the Human CBX3, and purified by antigen affinity chromatography.



Lanes	A	B	C	D
Sample (whole cell lysate)	HepG2	HeLa	A431	MCF7
Sample Volume (µg/lane)	30	30	30	30
Gel	13% SDS-PAGE reducing gel			
Recommended Concentration	1-10 µg/ml			
Secondary Antibody	Dylight 800-labeled Antibody to Rabbit IgG (H+L), at 1:5000 dilution. Developed using Odyssey imaging system.			
Explanation	Predicted band size : 20 kDa Observed band size : 20 kDa Additional bands at : 55 kDa and 40 kDa (We are unsure as to the identity of these extra bands.)			

Formulation

0.2 µm filtered solution in PBS

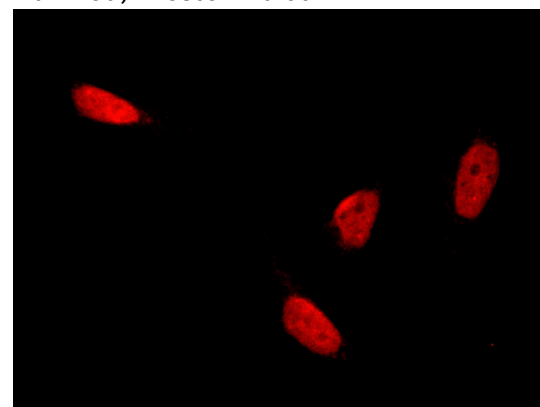
CBX3 Antibody, Rabbit PAb, Antigen Affinity Purified, Western blot

Storage

This antibody can be stored at 2°C-8°C for one month without detectable loss of activity. Antibody products are stable for twelve months from date of receipt when stored at -20°C to -80°C.

Preservative-Free.

Sodium azide is recommended to avoid contamination (final concentration 0.05%-0.1%). It is toxic to cells and should be disposed of properly. Avoid repeated freeze-thaw cycles.



CBX3 Antibody, Rabbit PAb, Antigen Affinity Purified, Immunofluorescence

Clonality

Polyclonal

Immunofluorescence staining of CBX3 in HeLa cells. Cells were fixed with 4% PFA, permeabilized with 0.3% Triton X-100 in PBS, blocked with 10% serum, and incubated with rabbit anti-human CBX3 polyclonal antibody (1 µg/ml) at 4°C overnight. Then cells were st

Ig Type

Rabbit IgG

Applications

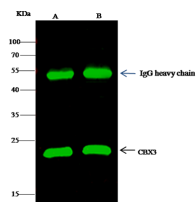
WB, IF, IP, ICC/IF

Dilutions

Anti-CBX3/HP1 gamma antibody



Catalog Number: 106543



CBX3 Antibody, Rabbit PAb, Antigen Affinity Purified, Immunoprecipitation

Lanes	A	B
Items		
Sample (whole cell lysate)	HeLa	A549
Sample quantity	0.5 mg	
IP antibody quantity	2 µg	
Protein G agarose	15 µl of 50% Protein G Agarose	
Gel	13% SDS-PAGE reducing gel	
Primary antibody	KLIJ-SMCC-SINOA766 antibody at 5 µg/ml	
Secondary antibody	Dylight 800-labeled antibody to rabbit IgG (H+L), at 1:5000 dilution	