

# HSD11B2 antibody



Catalog Number: 111543

## Product name

HSD11B2 antibody

## Specificity

Human, Mouse, Rat; other species not tested.

## Antibody description

HSD11B2 Rabbit Polyclonal antibody. Positive IHC detected in human kidney tissue. Positive WB detected in human kidney tissue, human placenta tissue, mouse kidney tissue, Transfected HEK-293 cells. Observed molecular weight by Western-blot: 40-43 kDa

## Preparation

This antibody was obtained by immunization of HSD11B2 recombinant protein (Accession Number: NM\_000196). Purification method: Antigen affinity purified.

## Formulation

PBS with 0.02% sodium azide and 50% glycerol pH 7.3.

## Storage

Store at -20°C. DO NOT ALIQUOT

## Clonality

Polyclonal

## Ig Type

Rabbit IgG

## Applications

ELISA, WB, IHC

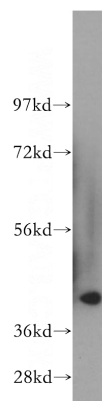
## Dilutions

Recommended Dilution:

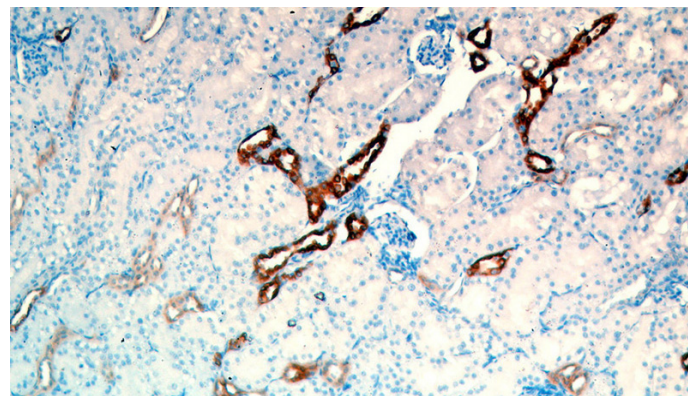
WB: 1:200-1:1000

IHC: 1:20-1:200

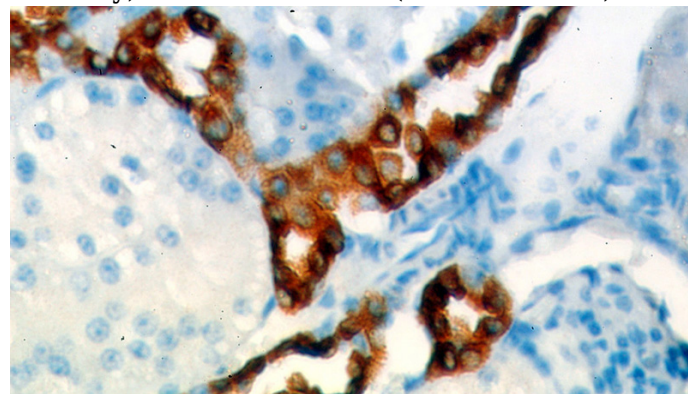
## Validations



human kidney tissue were subjected to SDS PAGE followed by western blot with Catalog No:111543(HSD11B2 antibody) at dilution of 1:300



Immunohistochemical of paraffin-embedded human kidney using Catalog No:111543(HSD11B2 antibody) at dilution of 1:50 (under 10x lens)



Immunohistochemical of paraffin-embedded human kidney using Catalog No:111543(HSD11B2 antibody) at dilution of 1:50 (under 40x lens)