

Anti-Phospho-AMPK alpha 1 (Ser496) Rabbit antibody



Catalog Number: 167143

Product name

Anti-Phospho-AMPK alpha 1 (Ser496) Rabbit antibody

Specificity

Human, Mouse, Rat

Antibody description

Phospho-AMPK alpha 1 (Ser496) Rabbit polyclonal antibody

Preparation

Antigen: Peptide sequence around phosphorylation site of serine 496 (S-G- pS-V-S) derived from Human AMPK α 1.

Formulation

Supplied at 1.0mg/mL in phosphate buffered saline (without Mg²⁺ and Ca²⁺), pH 7.4, 150mM NaCl, 0.02% sodium azide and 50% glycerol.

Storage

Store at 4°C short term. Store at -20°C long term. Avoid freeze / thaw cycle.

Clonality

Polyclonal

Ig Type

Rabbit IgG

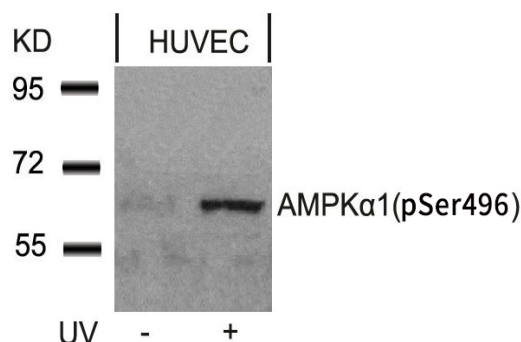
Applications

WB, IHC-P, ICC/IF

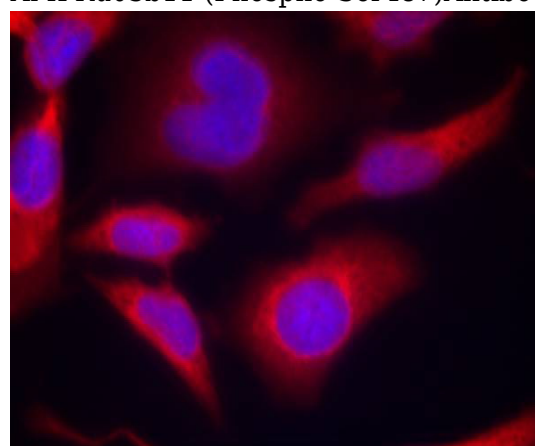
Dilutions

WB:1/500-1/1000 □ ICC:1/100-1/200 □ IHC:1/50-1/100

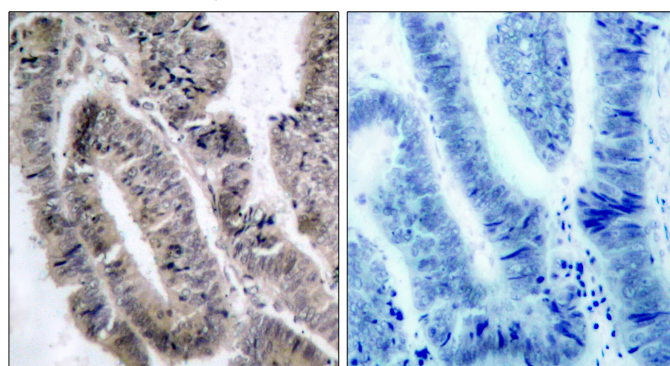
Validations



Western blot analysis of extracts from HUVEC cells untreated or treated with UV using AMPKu03b11 (Phospho-Ser487)Antibody .



Immunofluorescence staining of methanol-fixed HeLa cells using AMPKu03b11(Phospho-Ser487)Antibody .

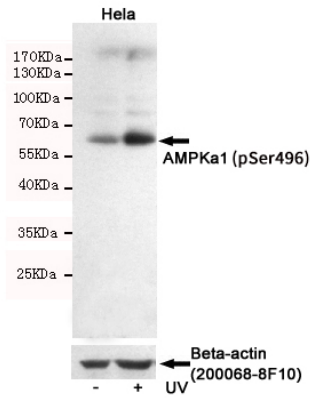


Immunohistochemical analysis of paraffin-embedded human colon carcinoma tissue using AMPKu03b11 (Phospho-Ser487)Antibody (left) or the same antibody preincubated with blocking

Anti-Phospho-AMPK alpha 1 (Ser496) Rabbit antibody



Catalog Number: 167143



Western blot detection of AMPKα1 (Phospho-Ser496) in HeLa cells untreated or UV-treated, using AMPKα1 (Phospho-Ser496) Rabbit pAb (dilution 1:2000, upper) or u03b2-Actin Mouse mAb (200068-8F10, lower). Predicted band size: 63 kDa. Observed band size: 63 kDa.

peptide (right).