

GPS2 antibody

Catalog Number: 111143

Product name

GPS2 antibody

IHC: 1:20-1:200

IF: 1:10-1:100

Specificity

Human, Mouse, Rat; other species not tested.

Antibody description

GPS2 Rabbit Polyclonal antibody. Positive WB detected in BxPC-3 cells. Positive IF detected in BxPC-3 cells. Positive IHC detected in human liver tissue, human lung cancer tissue, mouse lung tissue. Observed molecular weight by Western-blot: 37 kDa

Preparation

This antibody was obtained by immunization of GPS2 recombinant protein (Accession Number: NM_004489). Purification method: Antigen affinity purified.

Formulation

PBS with 0.1% sodium azide and 50% glycerol pH 7.3.

Storage

Store at -20°C. DO NOT ALIQUOT

Clonality

Polyclonal

Ig Type

Rabbit IgG

Applications

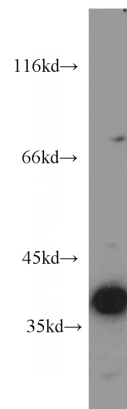
ELISA, WB, IHC, IF

Dilutions

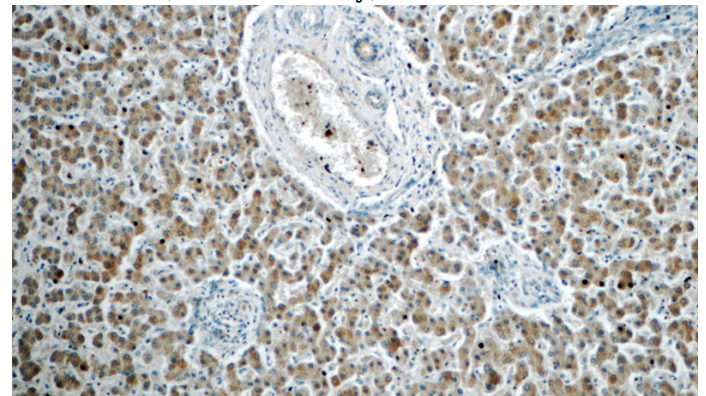
Recommended Dilution:

WB: 1:200-1:2000

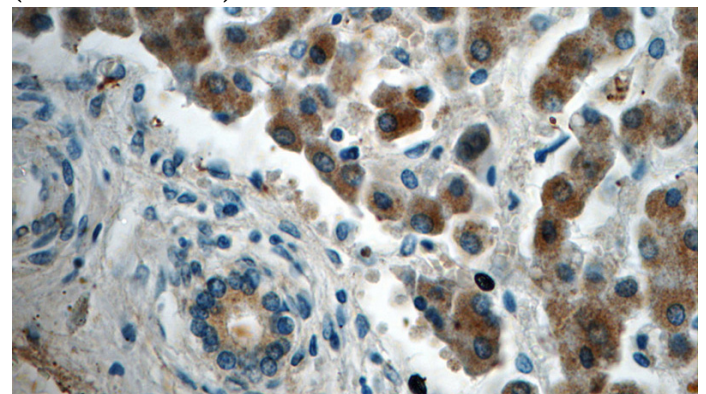
Validations



BxPC-3 cells were subjected to SDS PAGE followed by western blot with Catalog No:111143(GPS2 antibody) at dilution of 1:300



Immunohistochemistry of paraffin-embedded human liver tissue slide using Catalog No:111143(GPS2 Antibody) at dilution of 1:50 (under 10x lens)

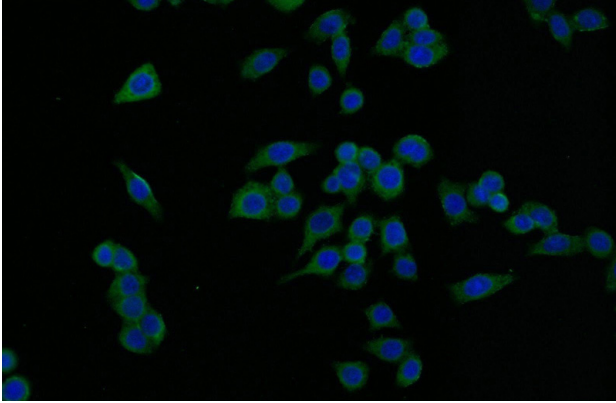


Immunohistochemistry of paraffin-embedded

GPS2 antibody

Catalog Number: 111143

human liver tissue slide using Catalog No:111143(GPS2 Antibody) at dilution of 1:50 (under 40x lens)



Immunofluorescent analysis of BxPC-3 cells using Catalog No:111143(GPS2 Antibody) at dilution of 1:25 and Alexa Fluor 488-conjugated AffiniPure Goat Anti-Rabbit IgG(H+L)