

Anti-Influenza M1/matrix protein 1 antibody



Catalog Number: 101143

Product name

Anti-Influenza M1/matrix protein 1 antibody

Immunogen

[H1N1 Influenza M1/matrix protein 1 \(His Tag\)](#)

Specificity

Influenza A H1N1 (A/Puerto Rico/8/34/Mount Sinai) Matrix protein 1 / M1

Antibody description

Rabbit polyclonal to Influenza M1/matrix protein 1

Preparation

Produced in rabbits immunized with purified, recombinant Influenza A H1N1 (A/Puerto Rico/8/34/Mount Sinai) Matrix protein 1 / M1 (NP_040978.1; Ser2-Lys252). Influenza A H1N1 (A/Puerto Rico/8/34/Mount Sinai) Matrix protein 1 / M1 specific IgG was purified by Influenza A H1N1 (A/Puerto Rico/8/34/Mount Sinai) Matrix protein 1 / M1 affinity chromatography.

Formulation

0.2 µm filtered solution in PBS

Storage

This antibody can be stored at 2°C-8°C for one month without detectable loss of activity. Antibody products are stable for twelve months from date of receipt when stored at -20°C to -80°C.

Preservative-Free.

Sodium azide is recommended to avoid contamination (final concentration 0.05%-0.1%). It is toxic to cells and should be disposed of properly. Avoid repeated freeze-thaw cycles.

Clonality

Polyclonal

Ig Type

Rabbit IgG

Applications

ELISA, WB, IHC-P, IP

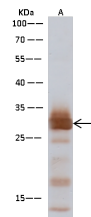
Dilutions

WB: 0.1-0.5 µg/ml

ELISA: 0.1-0.2 µg/ml

This antibody can be used at 0.1-0.2 µg/ml with the appropriate secondary reagents to detect Influenza A H1N1 (A/Puerto Rico/8/34/Mount Sinai) Matrix protein 1 / M1. The detection limit for Influenza A H1N1 (A/Puerto Rico/8/34/Mount Sinai) Matrix protein 1 / M1 is approximately 0.039 ng/well.

Validations



Lanes	A
Items	
Sample (Recombinant protein)	His-M1 (cat#40010-V07E)
Sample Volume (ng/lane)	30
Gel	13% SDS-PAGE reducing gel
Recommended Concentration	0.1-0.5 µg/ml
Secondary Antibody	HRP Conjugated Goat anti-rabbit IgG (H+L) at 1:1000 dilution

Influenza A H1N1 (A/Puerto Rico/8/34/Mount Sinai) Matrix protein 1 / M1 Antibody, Rabbit PAb, Antigen Affinity Purified, Western blot