

Anti-LRP10 antibody



Catalog Number: 141143

Product name

Anti-LRP10 antibody

Immunogen

[Human LRP10 \(His Tag\) recombinant protein](#)

Specificity

Human LRP10

Antibody description

Rabbit Polyclonal to Human LRP10

Preparation

Produced in rabbits immunized with purified, recombinant Human LRP10. LRP10 specific IgG was purified by Human LRP10 affinity chromatography.

Formulation

0.2 µm filtered solution in PBS

Storage

This antibody can be stored at 2°C-8°C for one month without detectable loss of activity. Antibody products are stable for twelve months from date of receipt when stored at -20°C to -80°C.

Preservative-Free.

Sodium azide is recommended to avoid contamination (final concentration 0.05%-0.1%). It is toxic to cells and should be disposed of properly. Avoid repeated freeze-thaw cycles.

Clonality

Polyclonal

Ig Type

Rabbit IgG

Applications

ELISA, IHC-P

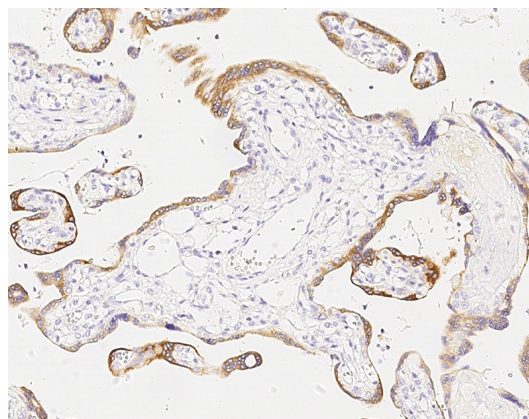
Dilutions

ELISA: 0.1-0.2 µg/ml

This antibody can be used at 0.1-0.2 µg/ml with the appropriate secondary reagents to detect Human LRP10.

IHC-P: 0.1-5 µg/mL

Validations



LRP10 Antibody, Rabbit PAb, Antigen Affinity Purified, Immunohistochemistry