

# Anti-SMYD3 Rabbit antibody



Catalog Number: 168843

## Product name

Anti-SMYD3 Rabbit antibody

## Specificity

Human, Mouse, Rat

## Antibody description

SMYD3 Rabbit monoclonal antibody

## Preparation

Antigen: A synthetic peptide of human SMYD3

## Formulation

50nM Tris-Glycine(pH 7.4), 0.15M NaCl, 40%Glycerol, 0.01% sodium azide and 0.05% BSA.

## Storage

Store at 4°C short term. Store at -20°C long term. Avoid freeze / thaw cycle.

## Clonality

Monoclonal

## Ig Type

Rabbit IgG

## Applications

WB, IHC-P, ICC/IF, FC, IP

## Dilutions

WB: 1/1000-1/2000

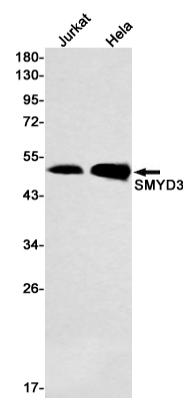
IHC: 1/20

ICC/IF: 1/50

FC: 1/20

IP: 1/20

## Validations



Western blot detection of SMYD3 in Jurkat, HeLa cell lysates using SMYD3 Rabbit mAb(1:1000 diluted). Predicted band size:49kDa. Observed band size:49kDa.