

Product name

WASL antibody

IHC: 1:20-1:200

IF: 1:10-1:100

Specificity

Human, Mouse, Rat; other species not tested.

Antibody description

WASL Rabbit Polyclonal antibody. Positive WB detected in mouse brain tissue. Positive IF detected in HepG2 cells. Positive IHC detected in human brain tissue. Observed molecular weight by Western-blot: 55kd

Preparation

This antibody was obtained by immunization of WASL recombinant protein (Accession Number: NM_003941). Purification method: Antigen affinity purified.

Formulation

PBS with 0.02% sodium azide and 50% glycerol pH 7.3.

Storage

Store at -20°C. DO NOT ALIQUOT

Clonality

Polyclonal

Ig Type

Rabbit IgG

Applications

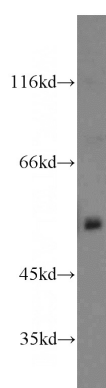
ELISA, WB, IHC, IF

Dilutions

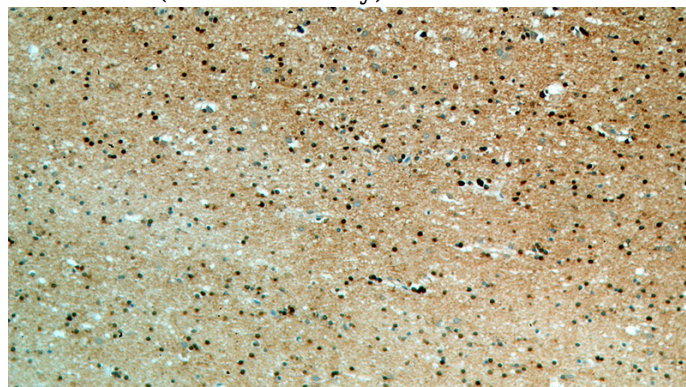
Recommended Dilution:

WB: 1:500-1:5000

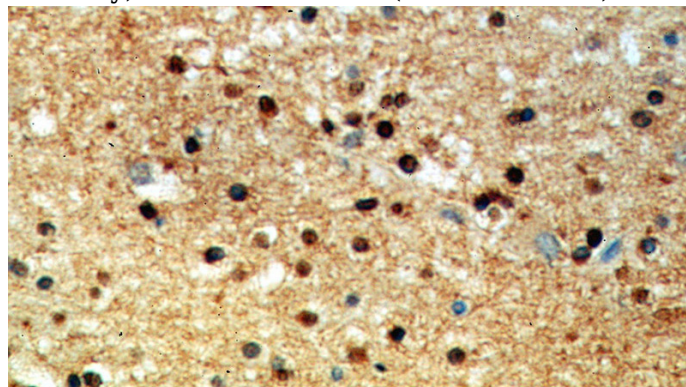
Validations



mouse brain tissue were subjected to SDS PAGE followed by western blot with Catalog No:116843(WASL antibody) at dilution of 1:500



Immunohistochemical of paraffin-embedded human brain using Catalog No:116843(WASL antibody) at dilution of 1:50 (under 10x lens)

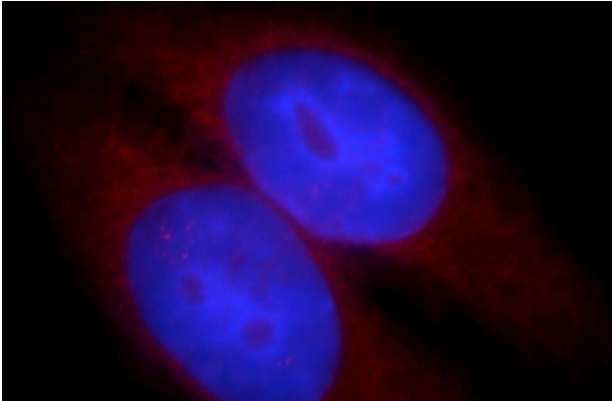


Immunohistochemical of paraffin-embedded human brain using Catalog No:116843(WASL antibody) at dilution of 1:50 (under 10x lens)

WASL antibody

Catalog Number: 116843

antibody) at dilution of 1:50 (under 40x lens)



Immunofluorescent analysis of HepG2 cells, using WASL antibody Catalog No:116843 at 1:25 dilution and Rhodamine-labeled goat anti-rabbit IgG (red). Blue pseudocolor = DAPI (fluorescent DNA dye).