

GP2 Polyclonal Antibody



Catalog Number: 164843

Product name

GP2 Polyclonal Antibody

Specificity

Human, Mouse

Antibody description

Polyclonal antibody to GP2

Preparation

Antigen: Recombinant fusion protein containing a sequence corresponding to amino acids 111-387 of human GP2 (NP_001007243.2).

Formulation

PBS with 0.02% sodium azide, 50% glycerol, pH7.3.

Storage

Store at -20°C. Avoid freeze / thaw cycles.

Clonality

Polyclonal

Ig Type

Rabbit IgG

Applications

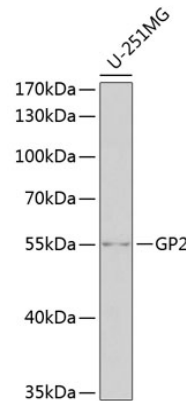
WB, IHC

Dilutions

WB 1:500 - 1:2000

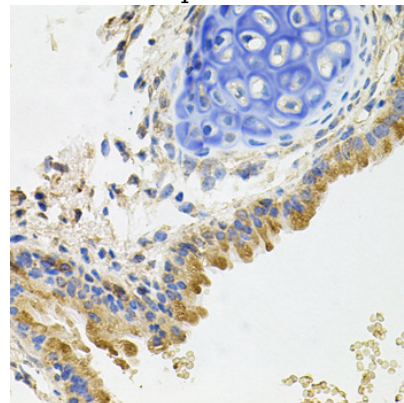
IHC 1:50 - 1:100

Validations



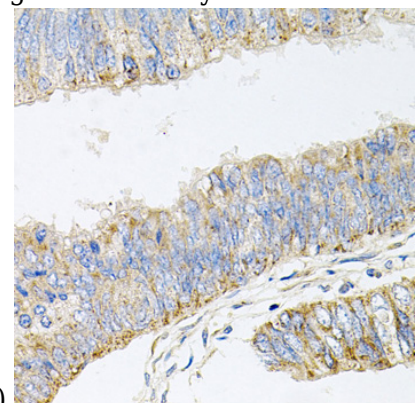
Western blot - GP2 Polyclonal Antibody

Western blot analysis of extracts of U-251MG cells, using GP2 antibody at 1:1000 dilution. Secondary antibody: HRP Goat Anti-Rabbit IgG (H+L) at 1:10000 dilution. Lysates/proteins: 25ug per lane. Blocking buffer: 3% nonfat dry milk in TBST. Detection: ECL Basic Kit. Exposure time: 90s.



Immunohistochemistry - GP2 Polyclonal Antibody

Immunohistochemistry of paraffin-embedded mouse lung using GP2 antibody at dilution of



1:100 (40x lens).

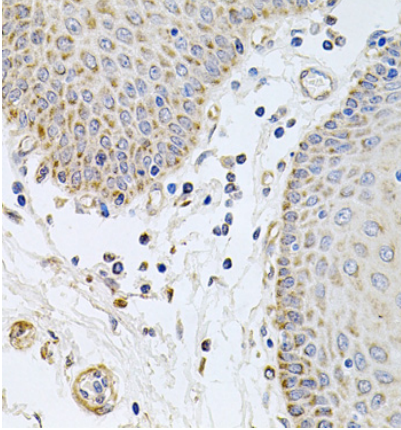
GP2 Polyclonal Antibody



Catalog Number: 164843

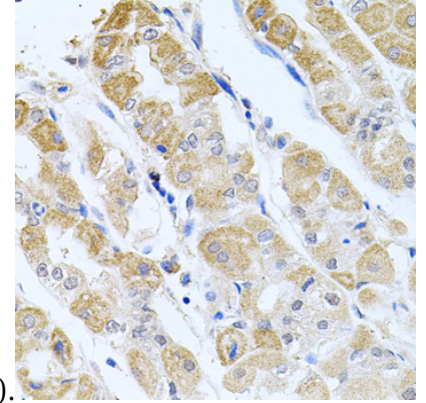
Immunohistochemistry - GP2 Polyclonal Antibody

Immunohistochemistry of paraffin-embedded human colon carcinoma using GP2 antibody at dilution of 1:100 (40x lens).



Immunohistochemistry - GP2 Polyclonal Antibody

Immunohistochemistry of paraffin-embedded human esophagus using GP2 antibody at dilution



of 1:100 (40x lens).

Immunohistochemistry - GP2 Polyclonal Antibody

Immunohistochemistry of paraffin-embedded human stomach using GP2 antibody at dilution of 1:100 (40x lens).