

MSI1 Polyclonal Antibody



Catalog Number: 163843

Product name

MSI1 Polyclonal Antibody

Specificity

Human, Rat

Antibody description

Polyclonal antibody to MSI1

Preparation

Antigen: A synthetic peptide corresponding to a sequence within amino acids 1-100 of human MSI1 (NP_002433.1).

Formulation

PBS with 0.02% sodium azide, 50% glycerol, pH7.3.

Storage

Store at -20°C. Avoid freeze / thaw cycles.

Clonality

Polyclonal

Ig Type

Rabbit IgG

Applications

WB, IHC, IF

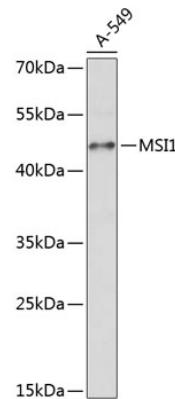
Dilutions

WB 1:500 - 1:1000

IHC 1:50 - 1:100

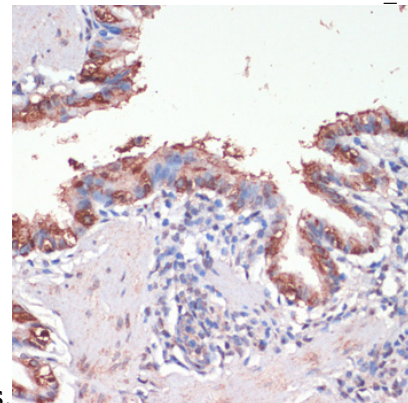
IF 1:50 - 1:100

Validations



Western blot - MSI1 Polyclonal Antibody

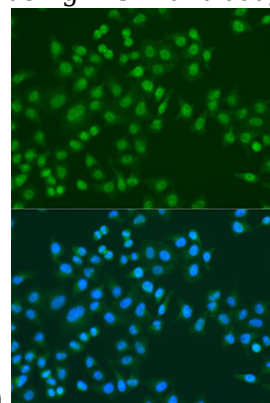
Western blot analysis of extracts of A-549 cells, using MSI1 antibody at 1:1000 dilution. Secondary antibody: HRP Goat Anti-Rabbit IgG (H+L) at 1:10000 dilution. Lysates/proteins: 25ug per lane. Blocking buffer: 3% nonfat dry milk in TBST. Detection: ECL Enhanced Kit. Exposure



time: 30s.

Immunohistochemistry - MSI1 Polyclonal Antibody

Immunohistochemistry of paraffin-embedded rat lung using MSI1 antibody at dilution of 1:200 (40x



lens).

MSI1 Polyclonal Antibody



Catalog Number: 163843

Immunofluorescence - MSI1 Polyclonal Antibody

MSI1 antibody at dilution of 1:100. Blue: DAPI for nuclear staining.

Immunofluorescence analysis of U2OS cells using