

# COMMD1 antibody



Catalog Number: 109443

## Product name

COMMD1 antibody

Recommended Dilution:

WB: 1:1000-1:10000

## Specificity

Human, Mouse, Rat; other species not tested.

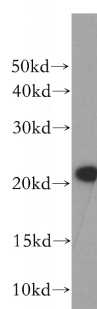
IP: 1:200-1:2000

IHC: 1:20-1:200

## Antibody description

COMMD1 Rabbit Polyclonal antibody. Positive WB detected in human liver tissue, HeLa cells, HepG2 cells, human brain tissue, human heart tissue, mouse brain tissue, rat brain tissue. Positive IP detected in mouse brain tissue. Positive IHC detected in human liver cancer tissue, human prostate cancer tissue. Observed molecular weight by Western-blot: 21kd

## Validations



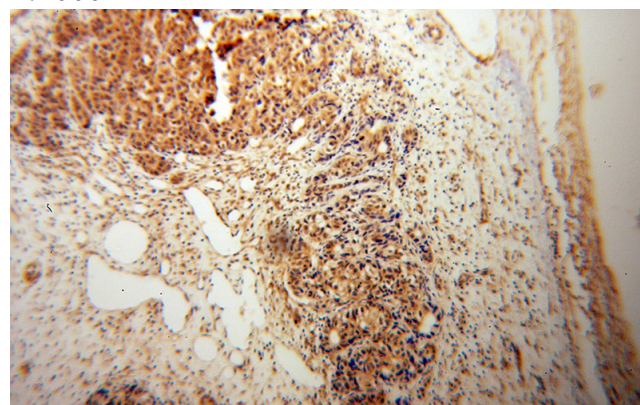
## Preparation

This antibody was obtained by immunization of COMMD1 recombinant protein (Accession Number: NM\_152516). Purification method: Antigen affinity purified.

human liver tissue were subjected to SDS PAGE followed by western blot with Catalog No:109443(COMMD1 antibody) at dilution of 1:1000

## Formulation

PBS with 0.1% sodium azide and 50% glycerol pH 7.3.



## Storage

Store at -20°C. DO NOT ALIQUOT

## Clonality

Polyclonal

## Ig Type

Rabbit IgG

Immunohistochemical of paraffin-embedded human liver cancer using Catalog No:109443(COMMD1 antibody) at dilution of 1:50 (under 10x lens)

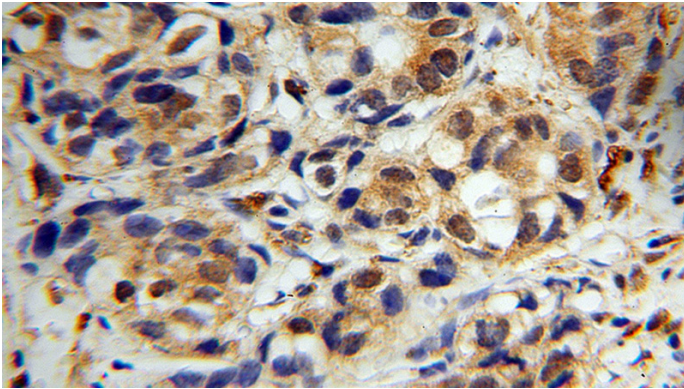
## Applications

ELISA, WB, IHC, IP

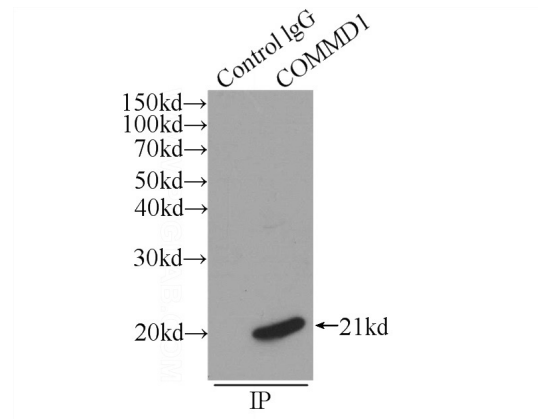
## Dilutions

# COMMD1 antibody

Catalog Number: 109443



Immunohistochemical of paraffin-embedded human liver cancer using Catalog No:109443(COMMD1 antibody) at dilution of 1:50 (under 40x lens)



IP Result of anti-COMMD1 (IP:Catalog No:109443, 3ug; Detection:Catalog No:109443 1:500) with mouse brain tissue lysate 5200ug.