

# BEND3 antibody

Catalog Number: 108443

## Product name

BEND3 antibody

IHC: 1:50-1:500

IF: 1:50-1:500

## Specificity

Human; other species not tested.

## Antibody description

BEND3 Rabbit Polyclonal antibody. Positive WB detected in HepG2 cells. Positive IF detected in HepG2 cells. Positive IHC detected in human liver cancer tissue. Observed molecular weight by Western-blot: 85; 94 kDa

## Preparation

This antibody was obtained by immunization of BEND3 recombinant protein (Accession Number: XM\_017011138). Purification method: Antigen Affinity purified.

## Formulation

PBS with 0.02% sodium azide and 50% glycerol pH 7.3.

## Storage

Store at -20°C. DO NOT ALIQUOT

## Clonality

Polyclonal

## Ig Type

Rabbit IgG

## Applications

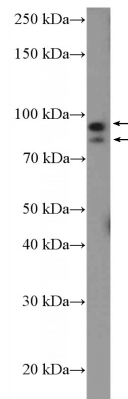
ELISA, WB, IF, IHC

## Dilutions

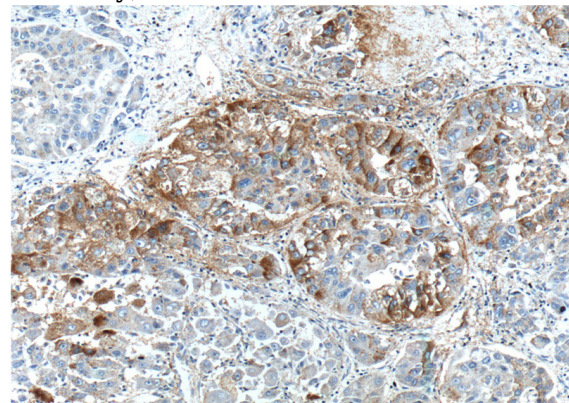
Recommended Dilution:

WB: 1:200-1:2000

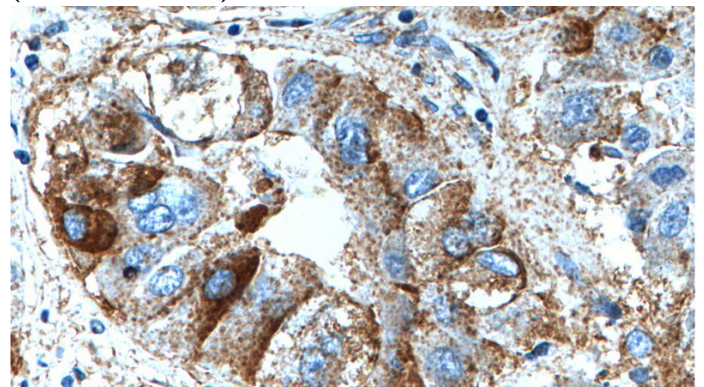
## Validations



HepG2 cells were subjected to SDS PAGE followed by western blot with Catalog No:117116(BEND3 Antibody) at dilution of 1:600



Immunohistochemistry of paraffin-embedded human liver cancer tissue slide using Catalog No:117116(BEND3 Antibody) at dilution of 1:200 (under 10x lens).



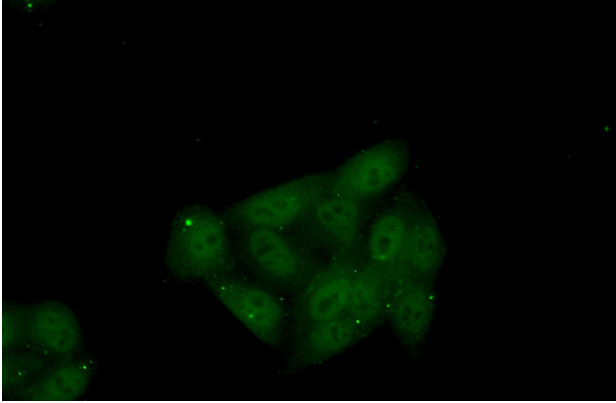
Immunohistochemistry of paraffin-embedded

# BEND3 antibody

Catalog Number: 108443

---

human liver cancer tissue slide using Catalog No:117116(BEND3 Antibody) at dilution of 1:200 (under 40x lens).



Immunofluorescent analysis of (10% Formaldehyde) fixed HepG2 cells using Catalog No:117116(BEND3 Antibody) at dilution of 1:50 and Alexa Fluor 488-conjugated AffiniPure Goat Anti-Rabbit IgG(H+L)