

Anti-C1QBP/HABP1 antibody



Catalog Number: 103443

Product name

Anti-C1QBP/HABP1 antibody

Immunogen

[Mouse C1QBP/HABP1 \(His Tag\) recombinant protein](#)

Specificity

Mouse C1QBP / HABP1

Antibody description

Rabbit polyclonal to C1QBP/HABP1

Preparation

Produced in rabbits immunized with purified, recombinant Mouse C1QBP / HABP1 (rM C1QBP / HABP1; NP_031599.2; Leu 72-Gln 279). C1QBP / HABP1 specific IgG was purified by Mouse C1QBP / HABP1 affinity chromatography.

Formulation

0.2 µm filtered solution in PBS with 5% trehalose

Storage

This antibody can be stored at 2°C-8°C for one month without detectable loss of activity. Antibody products are stable for twelve months from date of receipt when stored at -20°C to -80°C.

Preservative-Free.

Sodium azide is recommended to avoid contamination (final concentration 0.05%-0.1%). It is toxic to cells and should be disposed of properly. Avoid repeated freeze-thaw cycles.

Clonality

Polyclonal

Ig Type

Rabbit IgG

Applications

ELISA, WB, IP

Dilutions

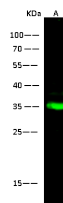
WB: 1-10 µg/mL

ELISA: 0.1-0.2 µg/mL

This antibody can be used at 0.1-0.2 µg/mL with the appropriate secondary reagents to detect Mouse C1QBP. The detection limit for Mouse C1QBP is approximately 0.00245 ng/well.

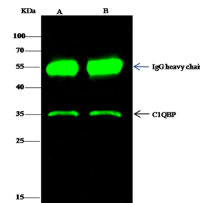
IP: 1-4 µg/mg of lysate

Validations



Items	Lanes	A
Sample (whole cell lysate)		Jurkat
Sample volume (µg/lane)		30
Gel		13% SDS-PAGE reducing gel
Recommended concentration		1-10 µg/ml
Secondary Antibody		Dylight 800-labeled Antibody to Rabbit IgG (H+L), at 1:5000 dilution.
Development		using Odyssey imaging system.
Explanation		Predicted band size : 31 kDa Observed band size : 35 kDa

C1QBP / HABP1 Antibody, Rabbit PAb, Antigen Affinity Purified, Western blot



Items	Lanes	A	B
Sample (whole cell lysate)		HeLa	HepG2
Sample quantity		0.5 mg	
IP antibody quantity		2 µg	
Protein G agarose		15 µl of 50% Protein G Agarose	
Gel		13% SDS-PAGE reducing gel	
Primary antibody		anti-C1QBP antibody at 5 µg/ml	
Secondary antibody		Dylight 800-labeled antibody to rabbit IgG (H+L), at 1:5000 dilution	

C1QBP / HABP1 Antibody, Rabbit PAb, Antigen Affinity Purified, Immunoprecipitation