

MAPKSP1 antibody



Catalog Number: 112443

Product name

MAPKSP1 antibody

Specificity

Human, Mouse, Rat; other species not tested.

Antibody description

MAPKSP1 Rabbit Polyclonal antibody. Positive WB detected in human liver tissue, L02 cells, mouse brain tissue, mouse liver tissue. Positive IHC detected in human prostate cancer tissue, human heart tissue, human liver tissue. Observed molecular weight by Western-blot: 14 kDa

Preparation

This antibody was obtained by immunization of MAPKSP1 recombinant protein (Accession Number: NM_021970). Purification method: Antigen affinity purified.

Formulation

PBS with 0.1% sodium azide and 50% glycerol pH 7.3.

Storage

Store at -20°C. DO NOT ALIQUOT

Clonality

Polyclonal

Ig Type

Rabbit IgG

Applications

ELISA, WB, IHC

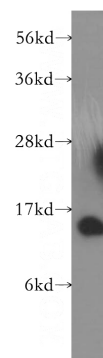
Dilutions

Recommended Dilution:

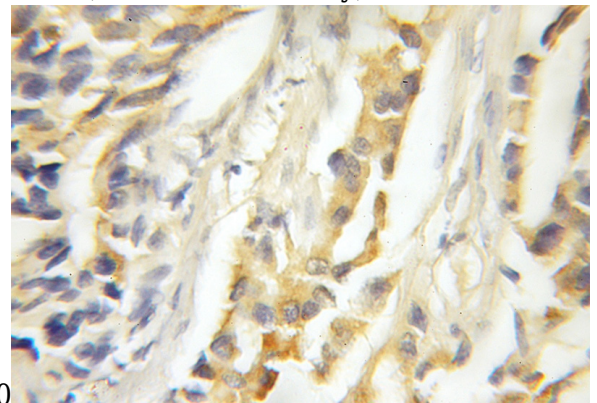
WB: 1:500-1:5000

IHC: 1:20-1:200

Validations



human liver tissue were subjected to SDS PAGE followed by western blot with Catalog No:112443(MAPKSP1 antibody) at dilution of



1:500
Immunohistochemical of paraffin-embedded human prostate cancer using Catalog No:112443(MAPKSP1 antibody) at dilution of 1:50 (under 10x lens)