

## General Information

### Gene Name Synonym

Alpha-2-plasmin inhibitor; Serpin F2

### Protein Construction

A DNA sequence encoding the human SerpinF2 (NP\_000925.2) (Met 1-Lys 491) was expressed, with a C-terminal polyhistidine tag.

### Organism

Human

### Expression Host

Human Cells

## QC Testing

### Activity

Measured by its ability to inhibit trypsin cleavage of a fluorogenic peptide substrate, Mca-RPKPVE-Nval-WRK(Dnp)-NH<sub>2</sub> (Anaspec, Catalog#27114). The IC<sub>50</sub> value is < 0.5 nM.

### Purity

> 97 % as determined by SDS-PAGE

### Endotoxin

< 1.0 EU per µg of the protein as determined by the LAL method

### Stability

Samples are stable for up to twelve months from date of receipt at -70°C

### Predicted N terminal

Met 28

### Molecular Mass

The recombinant human SerpinF2 consists of 475 amino acids after removal of the signal peptide and predicts a molecular mass of 53.2 kDa. By SDS-PAGE under reducing conditions, the apparent molecular mass of rhSerpinF2 is approximately 70 kDa due to glycosylation.

### Formulation

Lyophilized from sterile 25mM Tris, 150mM NaCl, pH 7.5

1. 5 % trehalose and mannitol are added as protectants before lyophilization.
2. Please contact us for any concerns or special requirements.

## Usage Guide

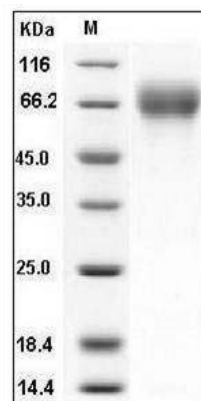
### Storage

Store it under sterile conditions at -20°C to -80°C. It is recommended that the protein be aliquoted for optimal storage. Avoid repeated freeze-thaw cycles.

### Reconstitution

Adding sterile water, prepare a stock solution of 0.25 mg/ml. Concentration is measured by UV-Vis.

### SDS-PAGE



Human SerpinF2 / SERPINF2 Protein (His Tag)  
SDS-PAGE