

Anti-Phospho-Tau (Ser202) Rabbit antibody



Catalog Number: 169043

Product name

Anti-Phospho-Tau (Ser202) Rabbit antibody

Ig Type

Rabbit IgG

Specificity

Human, Mouse, Rat

Applications

WB, IP

Antibody description

Phospho-Tau (Ser202) Rabbit monoclonal antibody

Dilutions

1:1000

Preparation

Antigen: A synthetic phosphopeptide corresponding to residues surrounding Ser202 of human Tau

1:20

Validations

Formulation

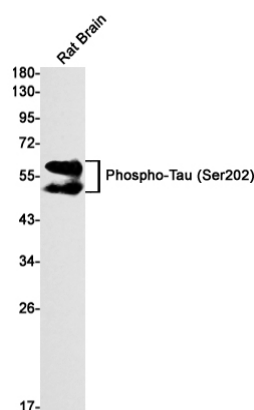
Supplied in 50nM Tris-Glycine(pH 7.4), 0.15M NaCl, 40%Glycerol, 0.01% sodium azide and 0.05% BSA.

Storage

Store at 4°C short term. Aliquot and store at -20°C long term. Avoid freeze / thaw cycle.

Clonality

Monoclonal



Western blot detection of Phospho-Tau (Ser202) in Rat Brain lysates using Phospho-Tau (Ser202) Rabbit mAb(1:1000 diluted). Predicted band size: 79kDa. Observed band size: 50-80kDa.