

Anti-KDEL3 antibody



Catalog Number: 176043

Product name

Polyclonal

Anti-KDEL3 antibody

Ig Type

Rabbit IgG

Specificity

Human, Mouse

Applications

WB, IHC-P

Antibody description

Rabbit polyclonal antibody to KDEL3

Dilutions

WB: 1:500-1:2000

Preparation

IHC-P: 1:100-1:300

This antigen of this antibody was the antiserum was produced against synthesized peptide derived from human erd23. aa range:61-110

Validations

Formulation

Liquid, Liquid in PBS containing 50% glycerol, 0.5% BSA and 0.02% sodium azide.

Storage

Store at +4°C after thawing. Aliquot store at -20°C or -80°C. Avoid repeated freeze / thaw cycles.

Clonality

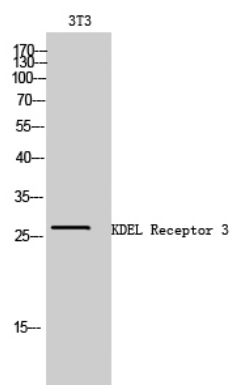


Fig1:: Western Blot analysis of 3T3 cells using KDEL Receptor 3 Polyclonal Antibody