

Anti-SSH1 antibody



Catalog Number: 175043

Product name

Anti-SSH1 antibody

Specificity

Human

Antibody description

Mouse monoclonal antibody to SSH1

Preparation

This antigen of this antibody was recombinant protein

Formulation

Liquid, 1*TBS (pH7.4), 1%BSA, 40%Glycerol.
Preservative: 0.05% Sodium Azide.

Storage

Store at +4°C after thawing. Aliquot store at -20°C or -80°C. Avoid repeated freeze / thaw cycles.

Clonality

Monoclonal

Ig Type

Mouse IgG1

Applications

IHC-P, FC

Dilutions

IHC-P: 1:50-1:200

FC: 1:50-1:100

Validations

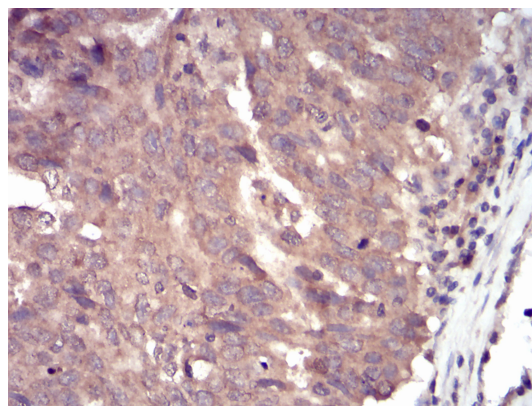


Fig1: Immunohistochemical analysis of paraffin-embedded human ovarian cancer tissue using anti-Slingshot homolog 1 antibody. Counter stained with hematoxylin.

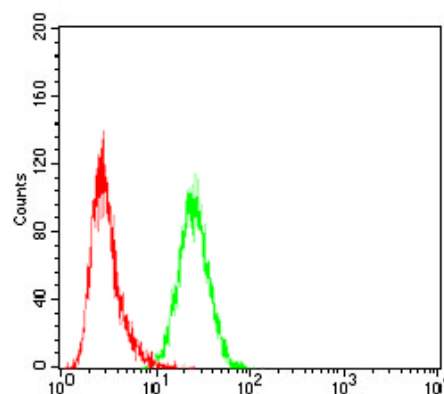


Fig2: Flow cytometric analysis of HeLa cells with Slingshot homolog 1 antibody at 1/100 dilution (green) compared with an unlabelled control (cells without incubation with primary antibody; red).