

# Anti-IL-15RA/IL15RA antibody



Catalog Number: 100733

## Product name

Anti-IL-15RA/IL15RA antibody

## Specificity

human IL15RA

## Antibody description

Rabbit polyclonal to IL-15RA/IL15RA

## Preparation

Produced in rabbits immunized with A synthetic peptide corresponding to the center region of the human cd215, and purified by antigen affinity chromatography.

## Formulation

0.2 µm filtered solution in PBS

## Storage

This antibody can be stored at 2°C-8°C for one month without detectable loss of activity. Antibody products are stable for twelve months from date of receipt when stored at -20°C to -80°C.

Preservative-Free.

Sodium azide is recommended to avoid contamination (final concentration 0.05%-0.1%). It is toxic to cells and should be disposed of

properly. Avoid repeated freeze-thaw cycles.

## Clonality

Polyclonal

## Ig Type

Rabbit IgG

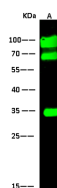
## Applications

WB

## Dilutions

WB: 1-10 µg/ml

## Validations



| Items                     | Lanes | A  |
|---------------------------|-------|--|
| Sample                    |       | Mouse liver tissue lysate  |
| Sample Volume (µg/lane)   |       | 30   |
| Gel                       |       | 13% SDS-PAGE reducing gel  |
| Recommended Concentration |       | 1-10 µg/ml   |
| Secondary Antibody        |       | Dylight 800-labeled Antibody To Rabbit IgG (H+L), at 1:5000 dilution.  |
| Explanation               |       | Developed using Odyssey imaging system.<br>Predicted band size : 28 kDa<br>Observed band size : 24 kDa<br>Additional bands at : 100 kDa and 70 kDa (We are unsure as to the identity of these extra bands. They are possible non-specific bindings). |

cd215 Antibody, Rabbit PAb, Antigen Affinity Purified, Western blot