

CLASP1 antibody

Catalog Number: 109333

Product name

CLASP1 antibody

IP: 1:200-1:2000

IHC: 1:20-1:200

Specificity

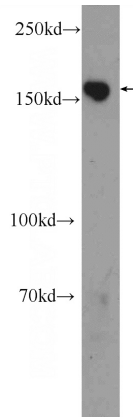
Human, Mouse, Rat; other species not tested.

IF: 1:10-1:100

Antibody description

CLASP1 Rabbit Polyclonal antibody. Positive IP detected in HeLa cells. Positive WB detected in rat brain tissue, human brain tissue. Positive IF detected in HeLa cells. Positive IHC detected in human testis tissue. Observed molecular weight by Western-blot: 162kd

Validations



Preparation

This antibody was obtained by immunization of CLASP1 recombinant protein (Accession Number: XM_047443786). Purification method: Antigen affinity purified.

rat brain tissue were subjected to SDS PAGE followed by western blot with Catalog No:109333(CLASP1 Antibody) at dilution of 1:600

Formulation

PBS with 0.02% sodium azide and 50% glycerol pH 7.3.

Storage

Store at -20°C. DO NOT ALIQUOT

Clonality

Polyclonal

Ig Type

Rabbit IgG

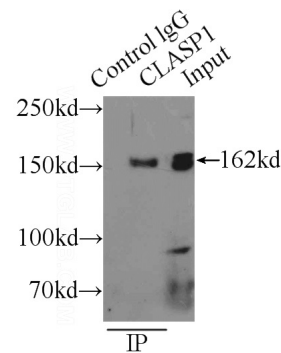
Applications

ELISA, IF, IHC, IP, WB

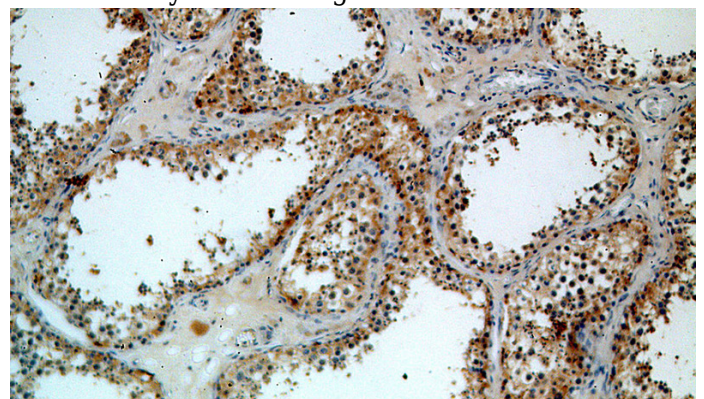
Dilutions

Recommended Dilution:

WB: 1:200-1:2000



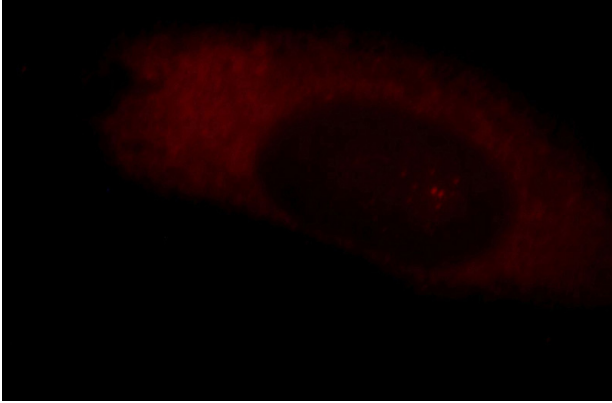
IP Result of anti-CLASP1 (IP:Catalog No:109333, 4ug; Detection:Catalog No:109333 1:500) with HeLa cells lysate 2000ug.



CLASP1 antibody

Catalog Number: 109333

Immunohistochemical of paraffin-embedded human testis using Catalog No:109333(CLASP1 antibody) at dilution of 1:100 (under 10x lens)



Immunofluorescent analysis of HeLa cells, using CLASP1 antibody Catalog No:109333 at 1:25 dilution and Rhodamine-labeled goat anti-rabbit IgG (red).