

# ATL3 antibody

Catalog Number: 108333

## Product name

ATL3 antibody

IP: 1:500-1:5000

IF: 1:10-1:100

## Specificity

Human, Mouse, Rat; other species not tested.

## Antibody description

ATL3 Rabbit Polyclonal antibody. Positive IF detected in HepG2 cells. Positive IP detected in HeLa cells. Positive WB detected in Jurkat cells, HEK-293 cells, HeLa cells, HepG2 cells, mouse liver tissue, SMMC-7721 cells. Observed molecular weight by Western-blot: 61 kDa

## Preparation

This antibody was obtained by immunization of ATL3 recombinant protein (Accession Number: NM\_015459). Purification method: Antigen affinity purified.

## Formulation

PBS with 0.02% sodium azide and 50% glycerol pH 7.3.

## Storage

Store at -20°C. DO NOT ALIQUOT

## Clonality

Polyclonal

## Ig Type

Rabbit IgG

## Applications

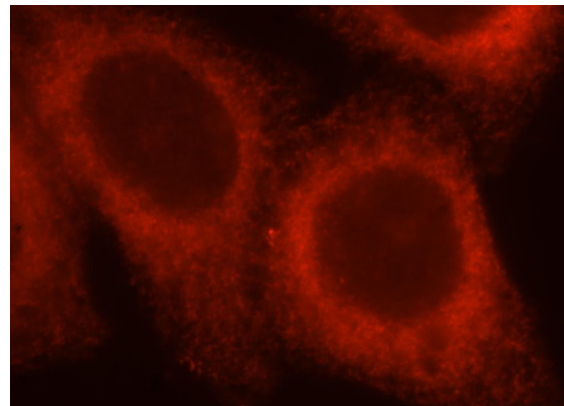
ELISA, IF, WB, IP

## Dilutions

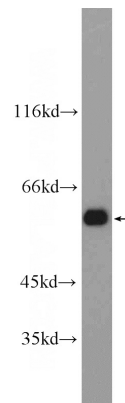
Recommended Dilution:

WB: 1:500-1:5000

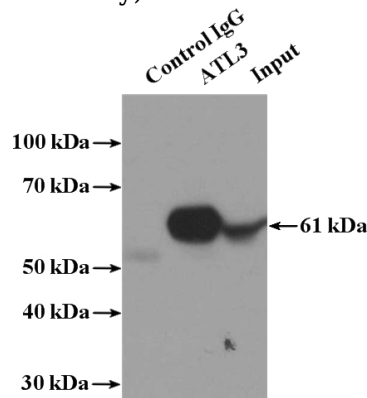
## Validations



Immunofluorescent analysis of HepG2 cells, using ATL3 antibody Catalog No:108333 at 1:25 dilution and Rhodamine-labeled goat anti-rabbit IgG (red).



Jurkat cells were subjected to SDS PAGE followed by western blot with Catalog No:108333(ATL3 Antibody) at dilution of 1:1500



IP Result of anti-ATL3 (IP:Catalog No:108333, 4ug; Detection:Catalog No:108333 1:1500) with

# ATL3 antibody



Catalog Number: 108333

---

HeLa cells lysate 3200ug.