

# Anti-POLDIP2 Rabbit antibody



Catalog Number: 167333

## Product name

Rabbit IgG

Anti-POLDIP2 Rabbit antibody

## Applications

## Specificity

WB, FC, IP

Human, Mouse, Rat

## Dilutions

## Antibody description

WB: 1/1000-1/2000

POLDIP2 Rabbit polyclonal antibody

FC: 1/50

## Preparation

IP: 1/20

Antigen: A synthetic peptide of human POLDIP2

## Validations

## Formulation

Supplied in 50nM Tris-Glycine(pH 7.4), 0.15M NaCl, 40%Glycerol, 0.01% sodium azide and 0.05% BSA.

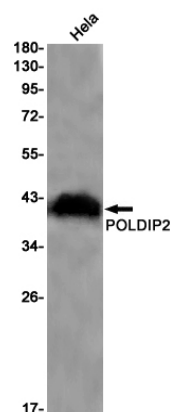
## Storage

Store at -20°C. Stable for 12 months from date of receipt.

## Clonality

Polyclonal

## Ig Type



Western blot detection of POLDIP2 in HeLa cell lysates using POLDIP2 Rabbit pAb(1:1000 diluted). Predicted band size:42kDa.Observed band size:38kDa.