

Anti-CITED1 antibody



Catalog Number: 175333

Product name

Anti-CITED1 antibody

Specificity

Human, Mouse, Rat

Antibody description

Rabbit polyclonal antibody to CITED1

Preparation

This antigen of this antibody was klh conjugated synthetic peptide derived from human cited1/abcc1 121-193/193

Formulation

Liquid, 0.01M TBS(pH7.4) with 1% BSA, 0.03% Proclin300 and 50% Glycerol.

Storage

Store at -20°C for one year. Avoid repeated freeze/thaw cycles. The lyophilized antibody is stable at room temperature for at least one month and for greater than a year when kept at -20°C. When reconstituted in sterile pH 7.4 0.01M PBS or diluent of antibody the antibody is stable for at least two weeks at 2-4°C.

Clonality

Polyclonal

Ig Type

Rabbit IgG

Applications

WB, IHC-P

Dilutions

WB:1:500-2000

IHC-P:1:400-800

Validations

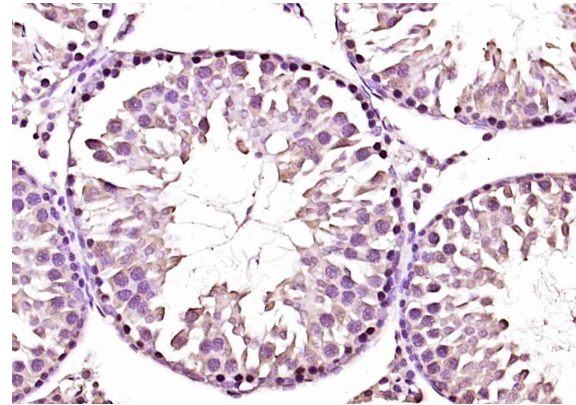


Fig1: Paraformaldehyde-fixed, paraffin embedded (rat testis tissue); Antigen retrieval by boiling in sodium citrate buffer (pH6.0) for 15min; Block endogenous peroxidase by 3% hydrogen peroxide for 20 minutes; Blocking buffer (normal goat serum) at 37°C for 30min; Antibody incubation with (CITED1) Polyclonal Antibody, Unconjugated at 1:200 overnight at 4°C, followed by operating according to SP Kit(Rabbit) (sp-0023)

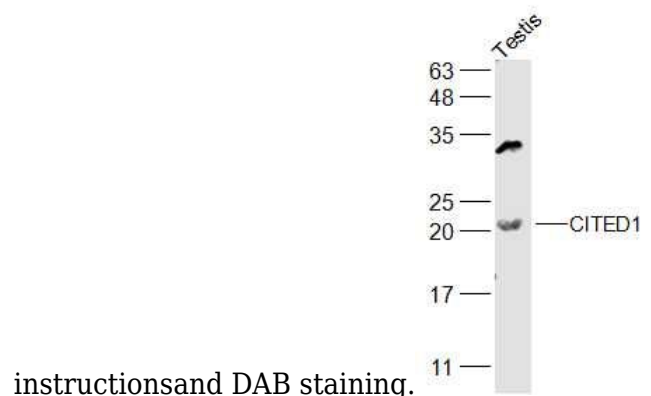


Fig2: Sample:; Testis (Mouse) Lysate at 40 ug; Primary: Anti-CITED1 at 1/2000 dilution; Secondary: IRDye800CW Goat Anti-Rabbit IgG at 1/20000 dilution; Predicted band size: 20 kD; Observed band size: 20 kD