

# Anti-UBE2H antibody



Catalog Number: 103333

## Product name

Anti-UBE2H antibody

## Immunogen

[Human UBE2H recombinant protein](#)

## Specificity

Human UBE2H

## Antibody description

Rabbit polyclonal to UBE2H

## Preparation

Produced in rabbits immunized with purified, recombinant Human UBE2H (rh UBE2H; P62256; Met1-Leu183). UBE2H specific IgG was purified by Human UBE2H affinity chromatography.

## Formulation

0.2 µm filtered solution in PBS

## Storage

This antibody can be stored at 2°C-8°C for one month without detectable loss of activity. Antibody products are stable for twelve months from date of receipt when stored at -20°C to -80°C.

Preservative-Free.

Sodium azide is recommended to avoid contamination (final concentration 0.05%-0.1%). It is toxic to cells and should be disposed of properly. Avoid repeated freeze-thaw cycles.

## Clonality

Polyclonal

## Ig Type

Rabbit IgG

## Applications

ELISA, WB, IP

## Dilutions

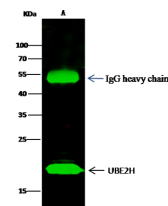
WB: 5-10 µg/mL

ELISA: 0.1-0.2 µg/mL

This antibody can be used at 0.1-0.2 µg/mL with the appropriate secondary reagents to detect Human UBE2H. The detection limit for Human UBE2H is < 0.039 ng/well.

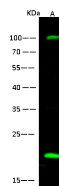
IP: 0.5-2 µg/mg of lysate

## Validations



Items	Lanes	A
Sample (whole cell lysate)		HeLa
Sample quantity		0.5 mg
IP antibody quantity		2 µg
Protein G agarose		1.5 µl of 50% Protein G Agarose
Gel		13% SDS-PAGE reducing gel
Primary antibody		UBE2H antibody at 5 µg/ml
Secondary antibody		Dylight 800-labeled antibody to rabbit IgG (H+L), at 1:5000 dilution.

UBE2H Antibody, Rabbit PAb, Antigen Affinity Purified, Immunoprecipitation



Items	Lanes	A
Sample (whole cell lysate)		HeLa
Sample Volume (µg/lane)		30
Gel		13% SDS-PAGE reducing gel
Recommended Concentration		5-10 µg/ml
Secondary Antibody		Dylight 800 labeled Antibody To Rabbit IgG (H+L), at 1:5000 dilution.
Developed using Odyssey imaging system.		
Explanation		Predicted band size : 21 kDa Observed band size : 21 kDa Additional bands at : 100 kDa [We are unsure as to the identity of these extra bands. They are possible non-specific bindings].

UBE2H Antibody, Rabbit PAb, Antigen Affinity Purified, Western blot