

# HADHA antibody

Catalog Number: 111333

## Product name

HADHA antibody

## Immunogen

[Human HADHA Recombinant protein \(GST tag\)](#)

## Specificity

Human, Mouse; other species not tested.

## Antibody description

HADHA Rabbit Polyclonal antibody. Positive WB detected in mouse kidney tissue, HEK-293 cells, HeLa cells, HepG2 cells, Jurkat cells, MCF7 cells, MDA-MB-453s cells, mouse heart tissue, mouse liver tissue, Raji cells, rat kidney tissue. Positive IP detected in HEK-293 cells. Positive IF detected in HepG2 cells. Positive IHC detected in human colon cancer tissue, human lung tissue, human ovary tissue, human placenta tissue, human spleen tissue, human testis tissue. Positive FC detected in HepG2 cells. Observed molecular weight by Western-blot: 70-79 kDa

## Preparation

This antibody was obtained by immunization of HADHA recombinant protein (Accession Number: NM\_000182). Purification method: Antigen affinity purified.

## Formulation

PBS with 0.1% sodium azide and 50% glycerol pH 7.3.

## Storage

Store at -20°C. DO NOT ALIQUOT

## Clonality

Polyclonal

## Ig Type

Rabbit IgG

## Applications

ELISA, WB, IHC, IF, IP, FC

## Dilutions

Recommended Dilution:

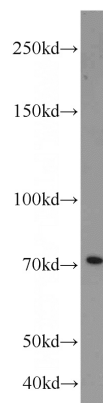
WB: 1:500-1:5000

IP: 1:200-1:1000

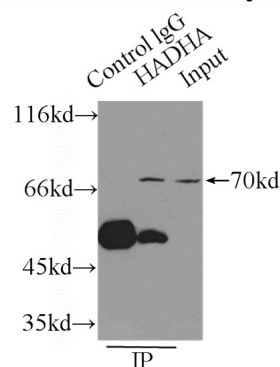
IHC: 1:20-1:200

IF: 1:10-1:100

## Validations



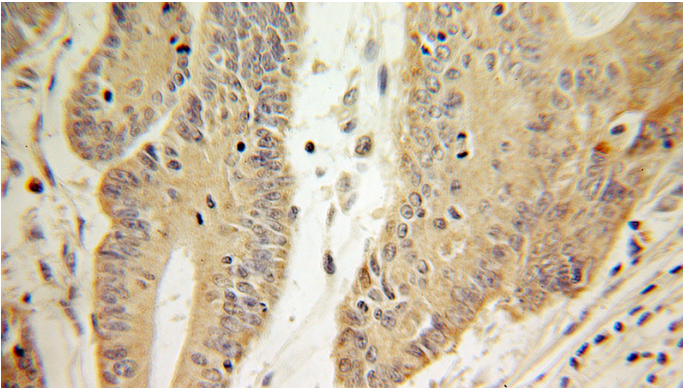
mouse kidney tissue were subjected to SDS PAGE followed by western blot with Catalog No:111333(HADHA antibody) at dilution of 1:1000



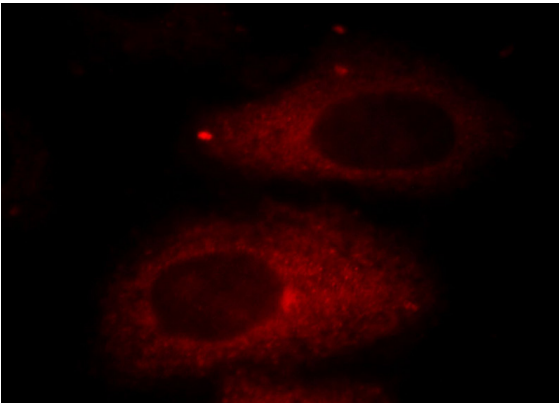
IP Result of anti-HADHA (IP:Catalog No:111333, 4ug; Detection:Catalog No:111333 1:200) with HEK-293 cells lysate 2500ug.

# HADHA antibody

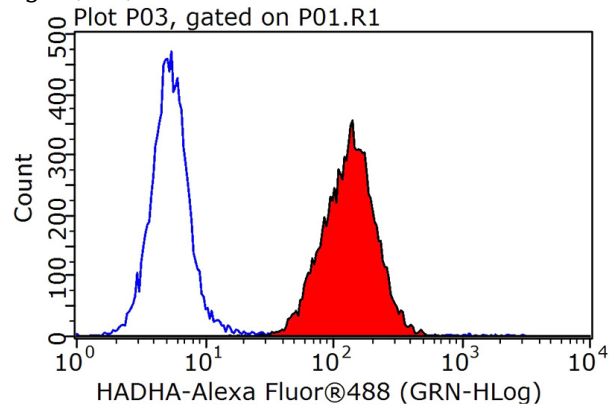
Catalog Number: 111333



Immunohistochemical of paraffin-embedded human colon cancer using Catalog No:111333(HADHA antibody) at dilution of 1:100 (under 40x lens)



Immunofluorescent analysis of HepG2 cells, using HADHA antibody Catalog No:111333 at 1:25 dilution and Rhodamine-labeled goat anti-rabbit IgG (red).



1X10<sup>6</sup> HepG2 cells were stained with 0.2ug HADHA antibody (Catalog No:111333, red) and control antibody (blue). Fixed with 90% MeOH blocked with 3% BSA (30 min). Alexa Fluor 488-conjugated AffiniPure Goat Anti-Rabbit IgG(H+L) with dilution 1:1000.