

RFWD3 antibody

Catalog Number: 114633

Product name

RFWD3 antibody

IHC: 1:20-1:200

IF: 1:20-1:200

Specificity

human, mouse, rat; other species not tested.

Antibody description

RFWD3 Rabbit Polyclonal antibody. Positive WB detected in mouse lung tissue. Positive IHC detected in human testis. Positive IF detected in Hela. Observed molecular weight by Western-blot: 85kd

Preparation

This antibody was obtained by immunization of RFWD3 recombinant protein (Accession Number: BC002574). Purification method: Antigen affinity purified.

Formulation

PBS with 0.02% sodium azide and 50% glycerol pH 7.3.

Storage

Store at -20°C. DO NOT ALIQUOT

Clonality

Polyclonal

Ig Type

Rabbit IgG

Applications

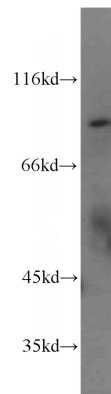
ELISA, WB, IHC, IF

Dilutions

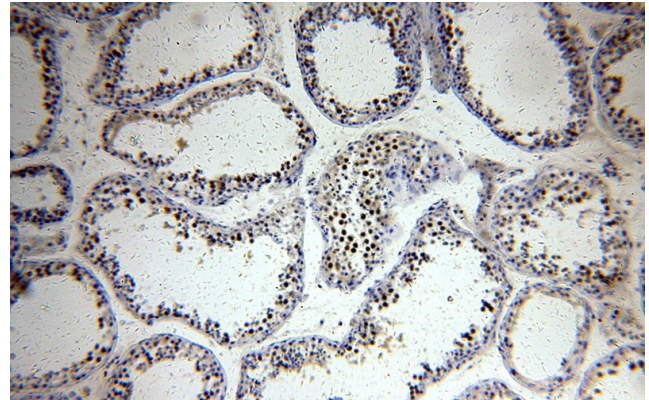
Recommended Dilution:

WB: 1:500-1:5000

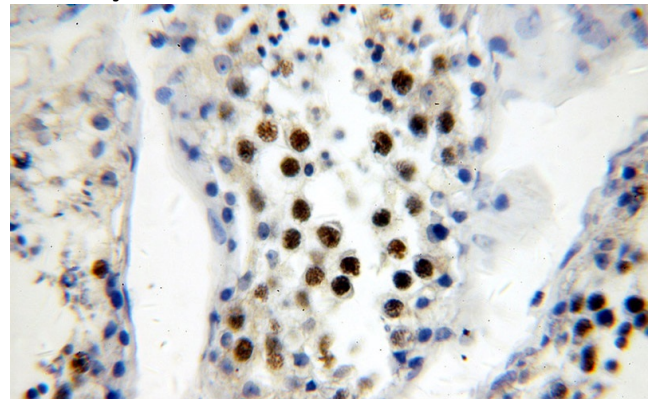
Validations



mouse lung tissue were subjected to SDS PAGE followed by western blot with Catalog No:114633(RFWD3 antibody) at dilution of 1:1000



Immunohistochemical of paraffin-embedded human testis using Catalog No:114633(RFWD3 antibody) at dilution of 1:400 (under 10x lens)

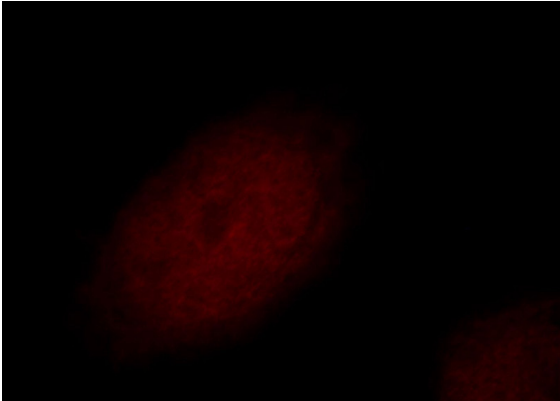


Immunohistochemical of paraffin-embedded human testis using Catalog No:114633(RFWD3

RFWD3 antibody

Catalog Number: 114633

antibody) at dilution of 1:400 (under 40x lens)



Immunofluorescent analysis of HeLa cells, using RFWD3 antibody Catalog No:114633 at 1:50 dilution and Rhodamine-labeled goat anti-rabbit IgG (red).