

# Human BCL2L1/Bcl-XL (His Tag) recombinant protein



Catalog Number: 504233

## General Information

### Gene Name Synonym

Apoptosis regulator Bcl-X

### Protein Construction

A DNA sequence encoding the human BCL2L1 isoform 1 (NP\_612815.1) (Met 1-Arg 212) was fused with a polyhistidine tag at the C-terminus.

### Organism

Human

### Expression Host

E. coli

## QC Testing

### Activity

1. Measured by its binding ability in a functional ELISA.
2. Immobilized human BID at 10 µg/mL (100 µl/well) can bind biotinylated human BCL2L1, The EC<sub>50</sub> of biotinylated human BCL2L1 is 7.1 ng/mL.
3. Immobilized mouse BID at 10 µg/mL (100 µl/well) can bind biotinylated human BCL2L1, The EC<sub>50</sub> of biotinylated human BCL2L1 is 7.01 ng/mL.

### Purity

> 85 % as determined by SDS-PAGE

### Endotoxin

Please contact us for more information.

### Stability

Samples are stable for up to twelve months from date of receipt at -70°C

### Predicted N terminal

Met

### Molecular Mass

The recombinant human BCL2L1 consisting of 222 amino acids and has a calculated molecular mass of 25.2 kDa. It migrates as an approximately 32 kDa band in SDS-PAGE under reducing conditions.

### Formulation

- Lyophilized from sterile 20mM Tris, pH 8.0
1. 5 % trehalose and mannitol are added as protectants before lyophilization.
  2. Please contact us for any concerns or special requirements.

## Usage Guide

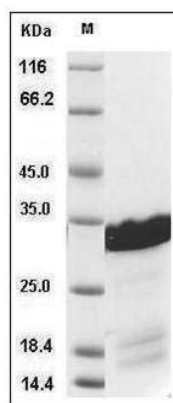
### Storage

Store it under sterile conditions at -20°C to -80°C. It is recommended that the protein be aliquoted for optimal storage. Avoid repeated freeze-thaw cycles.

### Reconstitution

Adding sterile water, prepare a stock solution of 0.25 mg/ml. Concentration is measured by UV-Vis.

### SDS-PAGE



Human BCL2L1 / Bcl-XL Protein (His Tag) SDS-PAGE