

ELP4 antibody



Catalog Number: 110233

Product name

ELP4 antibody

Immunogen

[Human ELP4 Recombinant protein \(His tag\)](#)

Specificity

human, mouse, rat; other species not tested.

Antibody description

ELP4 Rabbit Polyclonal antibody. Positive IHC detected in human endometrial cancer. Positive WB detected in human cerebellum tissue, human brain tissue. Observed molecular weight by Western-blot: 46kd

Preparation

This antibody was obtained by immunization of ELP4 recombinant protein (Accession Number: NM_001288726). Purification method: Antigen affinity purified.

Formulation

PBS with 0.02% sodium azide and 50% glycerol pH 7.3.

Storage

Store at -20°C. DO NOT ALIQUOT

Clonality

Polyclonal

Ig Type

Rabbit IgG

Applications

ELISA, WB, IHC

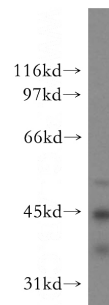
Dilutions

Recommended Dilution:

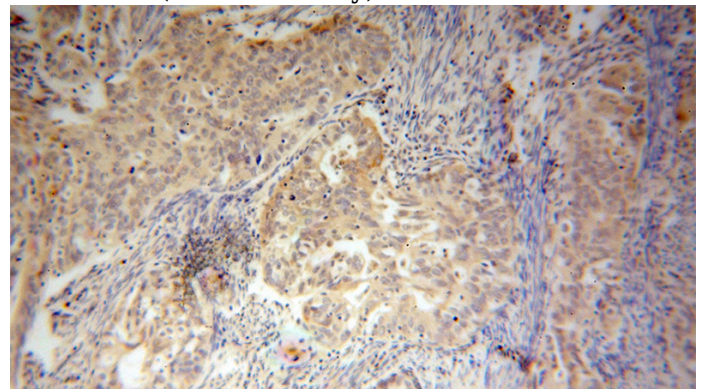
WB: 1:200-1:2000

IHC: 1:20-1:200

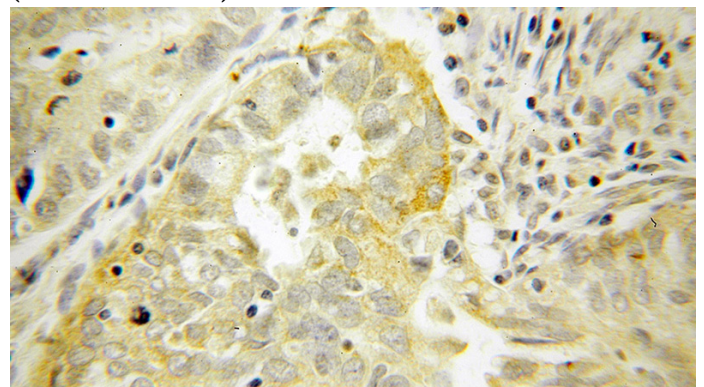
Validations



human cerebellum tissue were subjected to SDS PAGE followed by western blot with Catalog No:110233(ELP4 antibody) at dilution of 1:300



Immunohistochemical of paraffin-embedded human endometrial cancer using Catalog No:110233(ELP4 antibody) at dilution of 1:50 (under 10x lens)



ELP4 antibody



Catalog Number: 110233

Immunohistochemical of paraffin-embedded
human endometrial cancer using Catalog

No:110233(ELP4 antibody) at dilution of 1:50
(under 40x lens)