

ZCCHC11 antibody



Catalog Number: 116933

Product name

ZCCHC11 antibody

IHC: 1:20-1:200

IF: 1:10-1:100

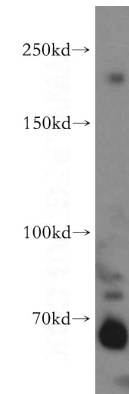
Specificity

human; other species not tested.

Validations

Antibody description

ZCCHC11 Rabbit Polyclonal antibody. Positive IF detected in Hela. Positive IHC detected in human brain. Positive WB detected in HeLa cells, human brain tissue. Observed molecular weight by Western-blot: 185kd



Preparation

This antibody was obtained by immunization of ZCCHC11 recombinant protein (Accession Number: BC048301). Purification method: Antigen affinity purified.

HeLa cells were subjected to SDS PAGE followed by western blot with Catalog No:116933(ZCCHC11 antibody) at dilution of 1:300

Formulation

PBS with 0.02% sodium azide and 50% glycerol pH 7.3.

Storage

Store at -20°C. DO NOT ALIQUOT

Clonality

Polyclonal

Ig Type

Rabbit IgG

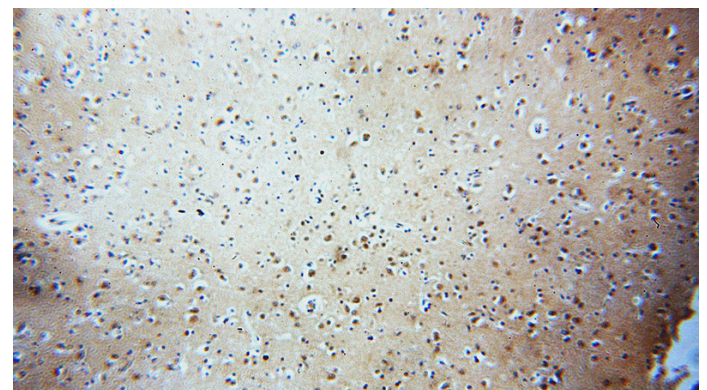
Applications

ELISA, WB, IHC, IF

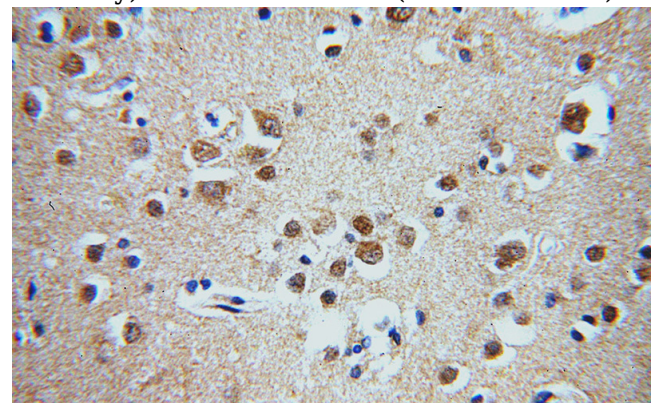
Dilutions

Recommended Dilution:

WB: 1:200-1:2000



Immunohistochemical of paraffin-embedded human brain using Catalog No:116933(ZCCHC11 antibody) at dilution of 1:50 (under 10x lens)

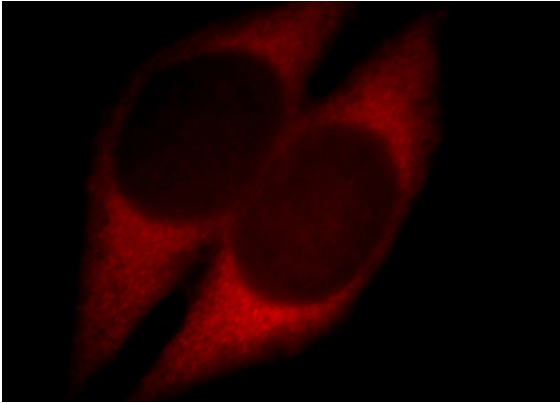


Immunohistochemical of paraffin-embedded

ZCCHC11 antibody

Catalog Number: 116933

human brain using Catalog No:116933(ZCCHC11 antibody) at dilution of 1:50 (under 40x lens)



Immunofluorescent analysis of HeLa cells, using ZCCHC11 antibody Catalog No:116933 at 1:25 dilution and Rhodamine-labeled goat anti-rabbit IgG (red).