

Placental lactogen antibody



Catalog Number: 113933

Product name

Placental lactogen antibody

IHC: 1:20-1:200

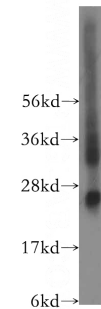
Specificity

Human; other species not tested.

Antibody description

Placental lactogen Rabbit Polyclonal antibody. Positive WB detected in human placenta tissue, human colon tissue. Positive IHC detected in human placenta tissue. Observed molecular weight by Western-blot: 25 kDa

Validations



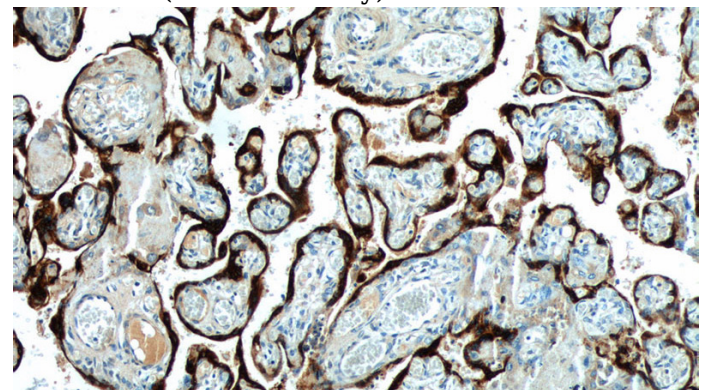
Preparation

This antibody was obtained by immunization of Placental lactogen recombinant protein (Accession Number: NM_020991). Purification method: Antigen affinity purified.

human placenta tissue were subjected to SDS PAGE followed by western blot with Catalog No:113933(CSH2 antibody) at dilution of 1:500

Formulation

PBS with 0.02% sodium azide and 50% glycerol pH 7.3.



Storage

Store at -20°C. DO NOT ALIQUOT

Clonality

Polyclonal

Ig Type

Rabbit IgG

Applications

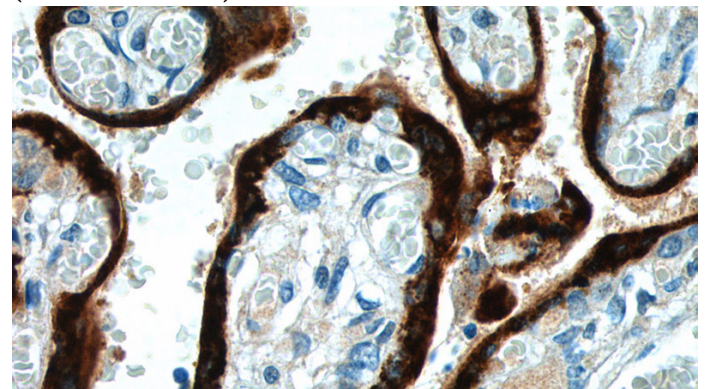
ELISA, WB, IHC

Dilutions

Recommended Dilution:

WB: 1:500-1:5000

Immunohistochemistry of paraffin-embedded human placenta tissue slide using Catalog No:113933(CSH2 Antibody) at dilution of 1:50 (under 10x lens)



Immunohistochemistry of paraffin-embedded human placenta tissue slide using Catalog No:113933(CSH2 Antibody) at dilution of 1:50

Placental lactogen antibody



Catalog Number: 113933

(under 40x lens)