

DUSP1 / MKP1 Polyclonal Antibody



Catalog Number: 163933

Product name

DUSP1 / MKP1 Polyclonal Antibody

Specificity

Human, Mouse, Rat

Antibody description

Polyclonal antibody to DUSP1 / MKP1

Preparation

Antigen: A synthetic peptide of human DUSP1 / MKP1

Formulation

PBS with 0.02% sodium azide, 50% glycerol, pH7.3.

Storage

Store at -20°C. Avoid freeze / thaw cycles.

Clonality

Polyclonal

Ig Type

Rabbit IgG

Applications

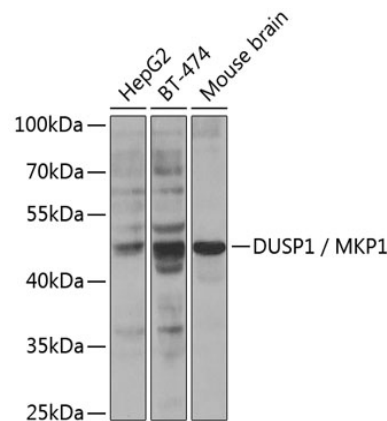
WB, IF

Dilutions

WB 1:500 - 1:2000

IF 1:50 - 1:200

Validations



Western blot - DUSP1 / MKP1 Polyclonal Antibody

Western blot analysis of extracts of various cell lines, using DUSP1 / MKP1 Antibody at 1:300 dilution. Secondary antibody: HRP Goat Anti-Rabbit IgG (H+L) at 1:10000 dilution. Lysates/proteins: 25ug per lane. Blocking buffer: 3% nonfat dry milk in TBST. Detection: ECL Enhanced Kit .