

Anti-Phospho-Vimentin (Ser72) Rabbit antibody



Catalog Number: 167533

Product name

Anti-Phospho-Vimentin (Ser72) Rabbit antibody

Ig Type

Rabbit IgG

Specificity

Human, Mouse, Rat

Applications

WB, IP

Antibody description

Phospho-Vimentin (Ser72) Rabbit polyclonal antibody

Dilutions

WB: 1/5000-1/100000

IP: 1/20

Preparation

Antigen: A synthetic phosphopeptide corresponding to residues surrounding Ser72 of human Vimentin

Formulation

Supplied in 50nM Tris-Glycine(pH 7.4), 0.15M NaCl, 40%Glycerol, 0.01% sodium azide and 0.05% BSA.

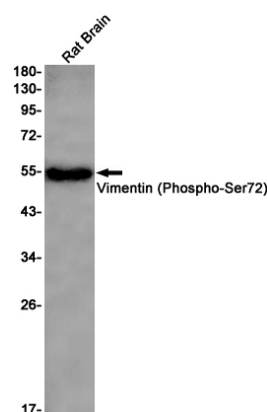
Storage

Store at -20°C. Stable for 12 months from date of receipt.

Clonality

Polyclonal

Validations



Western blot detection of Vimentin (Phospho-Ser72) in Rat Brain lysates using Vimentin (Phospho-Ser72) Rabbit pAb(1:1000 diluted). Predicted band size: 54kDa. Observed band size: 54kDa.