

RAMP1 antibody

Catalog Number: 114533

Product name

RAMP1 antibody

IHC: 1:50-1:500

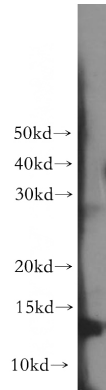
Specificity

Human; other species not tested.

Antibody description

RAMP1 Rabbit Polyclonal antibody. Positive IHC detected in human small intestine tissue. Positive FC detected in HepG2 cells. Positive WB detected in human heart tissue. Observed molecular weight by Western-blot: 14 kDa

Validations



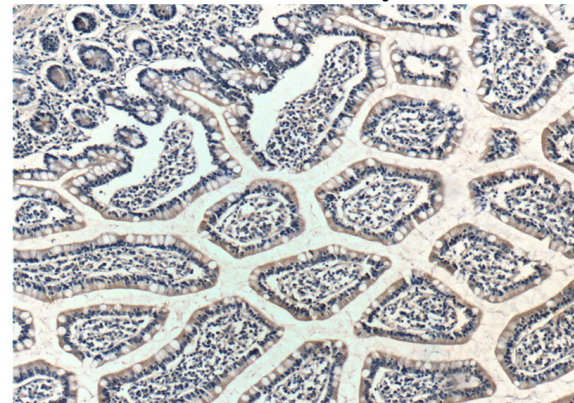
Preparation

This antibody was obtained by immunization of RAMP1 recombinant protein (Accession Number: NM_005855). Purification method: Antigen affinity purified.

human heart tissue were subjected to SDS PAGE followed by western blot with Catalog No:114533(RAMP1 antibody) at dilution of 1:300

Formulation

PBS with 0.1% sodium azide and 50% glycerol pH 7.3.



Storage

Store at -20°C. DO NOT ALIQUOT

Clonality

Polyclonal

Ig Type

Rabbit IgG

Applications

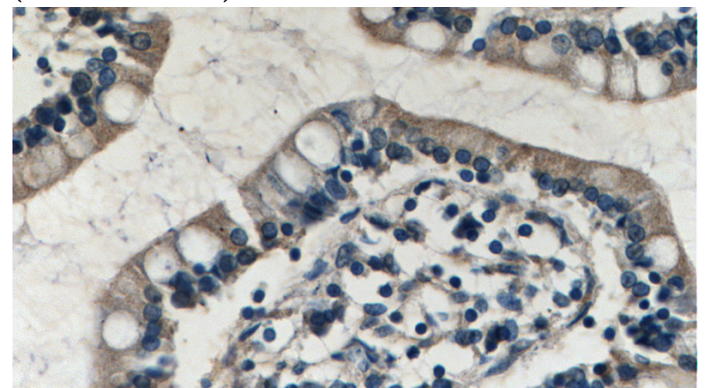
ELISA, WB, IHC, FC

Dilutions

Recommended Dilution:

WB: 1:200-1:2000

Immunohistochemistry of paraffin-embedded human small intestine tissue slide using Catalog No:114533(RAMP1 Antibody) at dilution of 1:200 (under 10x lens).



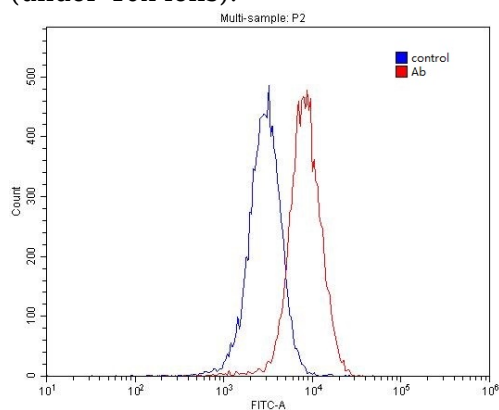
Immunohistochemistry of paraffin-embedded human small intestine tissue slide using Catalog No:114533(RAMP1 Antibody) at dilution of 1:200

RAMP1 antibody



Catalog Number: 114533

(under 40x lens).



1X10⁶ HepG2 cells were stained with .2ug RAMP1 antibody (Catalog No:114533, red) and control antibody (blue). Fixed with 4% PFA blocked with 3% BSA (30 min). Alexa Fluor 488-conjugated AffiniPure Goat Anti-Rabbit IgG(H+L) with dilution 1:1500.