

SF3A1 antibody



Catalog Number: 115133

Product name

SF3A1 antibody

Specificity

Human, Mouse, Rat; other species not tested.

Antibody description

SF3A1 Rabbit Polyclonal antibody. Positive IHC detected in human breast cancer tissue. Positive IF detected in HepG2 cells. Positive WB detected in K-562 cells, HEK-293 cells, HeLa cells, HL-60 cells, mouse brain tissue, mouse lung tissue. Positive IP detected in mouse brain tissue. Observed molecular weight by Western-blot: 120-130 kDa

Preparation

This antibody was obtained by immunization of SF3A1 recombinant protein (Accession Number: NM_005877). Purification method: Antigen affinity purified.

Formulation

PBS with 0.02% sodium azide and 50% glycerol pH 7.3.

Storage

Store at -20°C. DO NOT ALIQUOT

Clonality

Polyclonal

Ig Type

Rabbit IgG

Applications

ELISA, WB, IHC, IF, IP

Dilutions

Recommended Dilution:

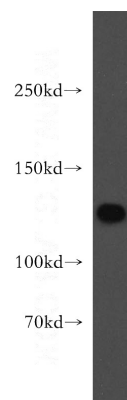
WB: 1:1000-1:10000

IP: 1:200-1:2000

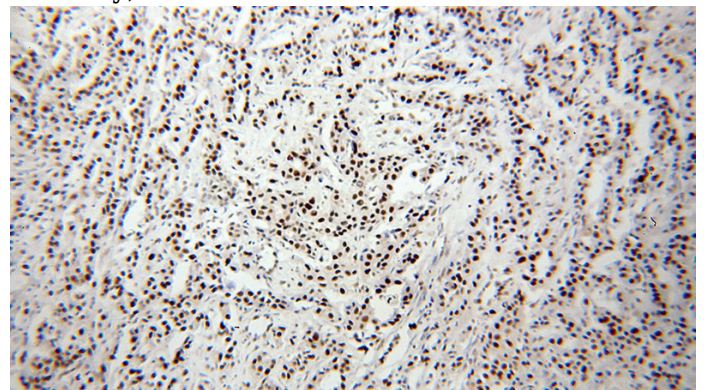
IHC: 1:20-1:200

IF: 1:10-1:100

Validations



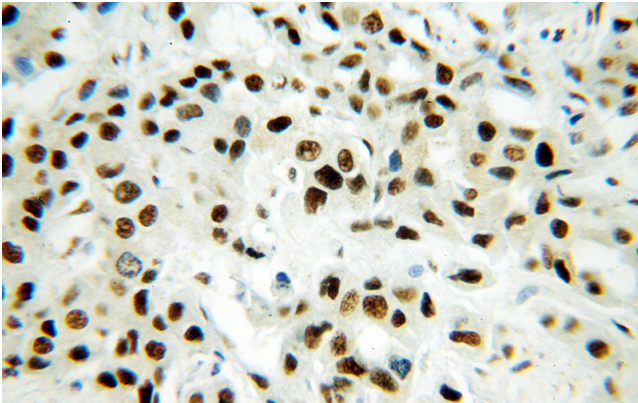
K-562 cells were subjected to SDS PAGE followed by western blot with Catalog No:115133(SF3A1 antibody) at dilution of 1:1000



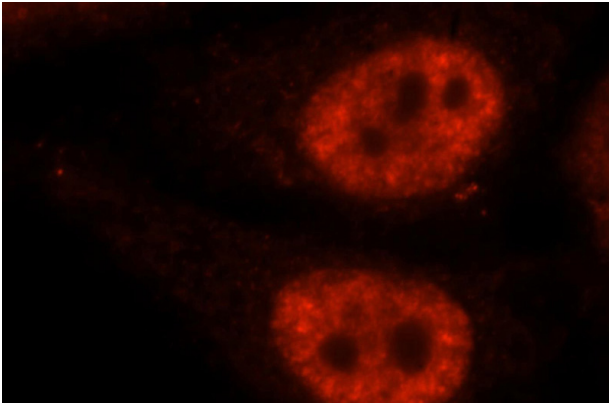
Immunohistochemical of paraffin-embedded human breast cancer using Catalog No:115133(SF3A1 antibody) at dilution of 1:400 (under 10x lens)

SF3A1 antibody

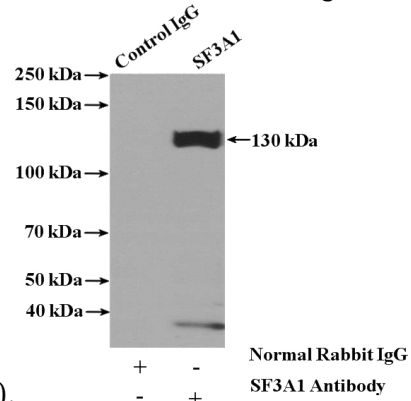
Catalog Number: 115133



Immunohistochemical of paraffin-embedded human breast cancer using Catalog No:115133(SF3A1 antibody) at dilution of 1:400 (under 40x lens)



Immunofluorescent analysis of HepG2 cells, using SF3A1 antibody Catalog No:115133 at 1:25 dilution and Rhodamine-labeled goat anti-rabbit



IgG (red).

IP Result of anti-SF3A1 (IP:Catalog No:115133, 4ug; Detection:Catalog No:115133 1:500) with mouse brain tissue lysate 4000ug.