

NAV2 Polyclonal Antibody



Catalog Number: 163133

Product name

NAV2 Polyclonal Antibody

Specificity

Human

Antibody description

Polyclonal antibody to NAV2

Preparation

Antigen: Recombinant fusion protein containing a sequence corresponding to amino acids 1800-1980 of human NAV2 (NP_660093.2).

Formulation

PBS with 0.02% sodium azide, 50% glycerol, pH7.3.

Storage

Store at -20°C. Avoid freeze / thaw cycles.

Clonality

Polyclonal

Ig Type

Rabbit IgG

Applications

WB, IHC, IF

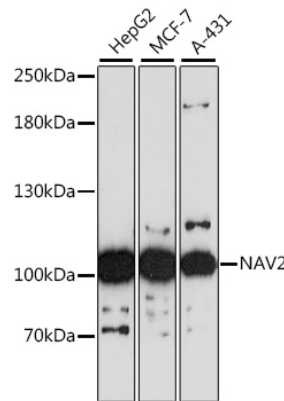
Dilutions

WB 1:500 - 1:2000

IHC 1:50 - 1:100

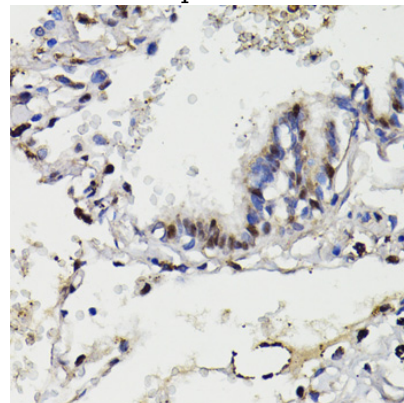
IF 1:50 - 1:100

Validations



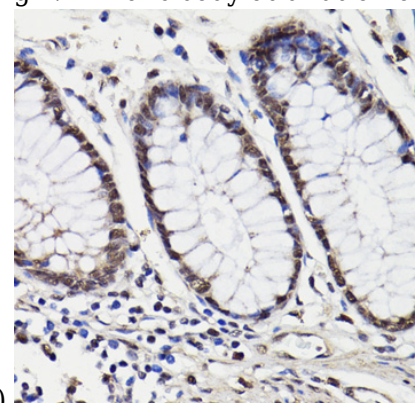
Western blot - NAV2 Polyclonal Antibody

Western blot analysis of extracts of various cell lines, using NAV2 antibody at 1:3000 dilution. Secondary antibody: HRP Goat Anti-Rabbit IgG (H+L) at 1:10000 dilution. Lysates/proteins: 25ug per lane. Blocking buffer: 3% nonfat dry milk in TBST. Detection: ECL Basic Kit. Exposure time: 90s.



Immunohistochemistry - NAV2 Polyclonal Antibody

Immunohistochemistry of paraffin-embedded human lung using NAV2 antibody at dilution of



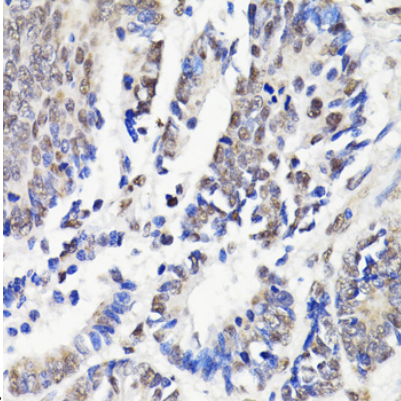
1:100 (40x lens).

NAV2 Polyclonal Antibody

Catalog Number: 163133

Immunohistochemistry - NAV2 Polyclonal Antibody

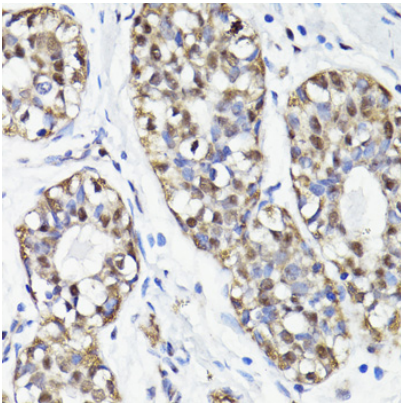
Immunohistochemistry of paraffin-embedded human colon using NAV2 antibody at dilution of



1:100 (40x lens).

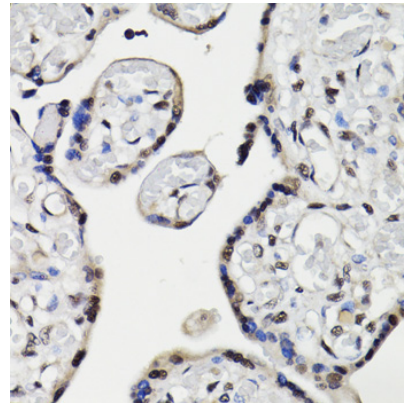
Immunohistochemistry - NAV2 Polyclonal Antibody

Immunohistochemistry of paraffin-embedded human colon carcinoma using NAV2 antibody at dilution of 1:100 (40x lens).



Immunohistochemistry - NAV2 Polyclonal Antibody

Immunohistochemistry of paraffin-embedded human breast cancer using NAV2 antibody at dilution of 1:100 (40x lens).



Immunohistochemistry - NAV2 Polyclonal Antibody

Immunohistochemistry of paraffin-embedded human placenta using NAV2 antibody at dilution of 1:100 (40x lens).