

# GSS Polyclonal Antibody



Catalog Number: 162133

## Product name

GSS Polyclonal Antibody

## Specificity

Human, Mouse, Rat

## Antibody description

Polyclonal antibody to GSS

## Preparation

Antigen: Recombinant fusion protein containing a sequence corresponding to amino acids 373-474 of human GSS (NP\_000169.1).

## Formulation

PBS with 0.02% sodium azide, 50% glycerol, pH7.3.

## Storage

Store at -20°C. Avoid freeze / thaw cycles.

## Clonality

Polyclonal

## Ig Type

Rabbit IgG

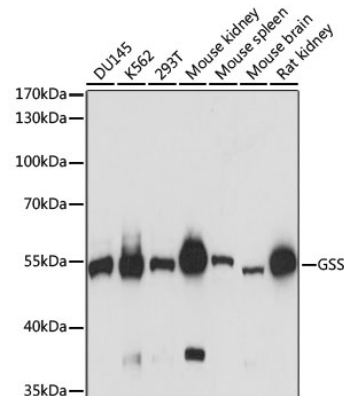
## Applications

WB

## Dilutions

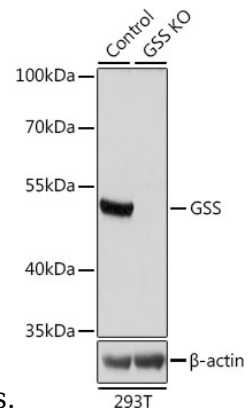
WB 1:500 - 1:2000

## Validations



### Western blot - GSS Polyclonal Antibody

Western blot analysis of extracts of various cell lines, using GSS antibody at 1:3000 dilution. Secondary antibody: HRP Goat Anti-Rabbit IgG (H+L) at 1:10000 dilution. Lysates/proteins: 25ug per lane. Blocking buffer: 3% nonfat dry milk in TBST. Detection: ECL



Basic Kit .Exposure time: 3s.

### Western blot - GSS Polyclonal Antibody

Western blot analysis of extracts from normal (control) and GSS knockout 293T cells, using GSS antibody at 1:1000 dilution. Secondary antibody: HRP Goat Anti-Rabbit IgG (H+L) at 1:10000 dilution. Lysates/proteins: 25ug per lane. Blocking buffer: 3% nonfat dry milk in TBST. Detection: ECL Basic Kit .Exposure time: 5s.