

Anti-KIR3DL1 antibody



Catalog Number: 142833

Product name

Anti-KIR3DL1 antibody

Specificity

Human KIR3DL1

Antibody description

Rabbit Polyclonal to Human KIR3DL1

Preparation

Produced in rabbits immunized with a synthetic peptide corresponding to the C-terminus of the Human KIR3DL1. The IgG fraction of the cell culture supernatant was purified by Protein A affinity chromatography.

Formulation

0.2 µm filtered solution in PBS

Storage

This antibody can be stored at 2°C-8°C for one month without detectable loss of activity. Antibody products are stable for twelve months from date of receipt when stored at -20°C to -80°C.

Preservative-Free.

Sodium azide is recommended to avoid contamination (final concentration 0.05%-0.1%). It

is toxic to cells and should be disposed of properly. Avoid repeated freeze-thaw cycles.

Clonality

Polyclonal

Ig Type

Rabbit IgG

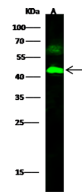
Applications

WB

Dilutions

WB: 0.5-5 µg/ml

Validations



Items	Lanes	A
Sample (whole cell lysate)		293T
Sample Volume (µg/lane)		30
Gel		13% SDS-PAGE, reducing gel
Recommended Concentration		10 µg/ml
Secondary Antibody		Dylight 800 labeled Antibody to Rabbit IgG (H+L), at 1:5000 dilution.
Explanation		Developed using Odyssey imaging system. Predicted band size : 49 kDa Observed band size : 45 kDa Additional bands at : 62 kDa [We are unsure as to the identity of these extra bands.]

KIR3DL1 Antibody, Rabbit PAb, Western blot