

SMARCD1 antibody



Catalog Number: 115433

Product name

SMARCD1 antibody

WB: 1:200-1:2000

IP: 1:200-1:2000

Specificity

Human, Mouse, Rat; other species not tested.

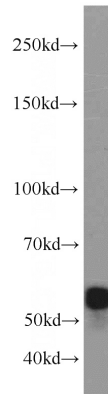
IHC: 1:20-1:200

IF: 1:20-1:200

Antibody description

SMARCD1 Rabbit Polyclonal antibody. Positive WB detected in mouse brain tissue, human brain tissue, Jurkat cells. Positive IP detected in mouse brain tissue. Positive IHC detected in human lymphoma tissue. Positive IF detected in SH-SY5Y cells. Observed molecular weight by Western-blot: 58 kDa

Validations



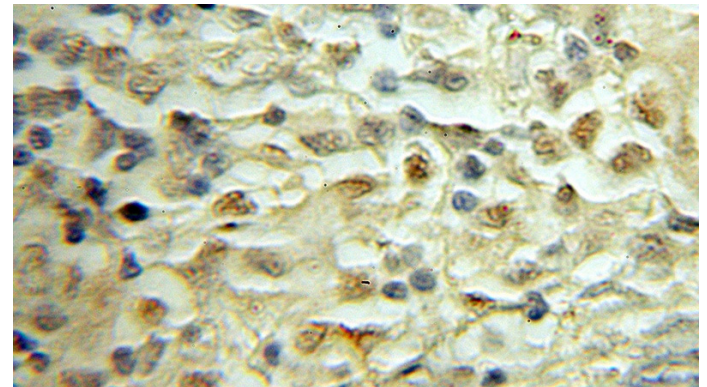
Preparation

This antibody was obtained by immunization of SMARCD1 recombinant protein (Accession Number: BC009368). Purification method: Antigen affinity purified.

mouse brain tissue were subjected to SDS PAGE followed by western blot with Catalog No:115433(SMARCD1 antibody) at dilution of 1:600

Formulation

PBS with 0.1% sodium azide and 50% glycerol pH 7.3.



Storage

Store at -20°C. DO NOT ALIQUOT

Clonality

Polyclonal

Ig Type

Rabbit IgG

Immunohistochemical of paraffin-embedded human lymphoma using Catalog No:115433(SMARCD1 antibody) at dilution of 1:50 (under 10x lens)

Applications

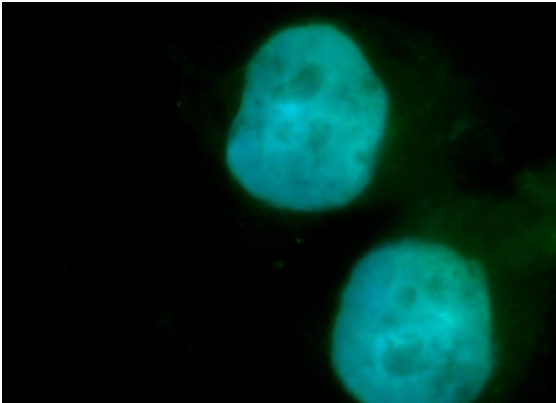
ELISA, WB, IHC, IF, IP

Dilutions

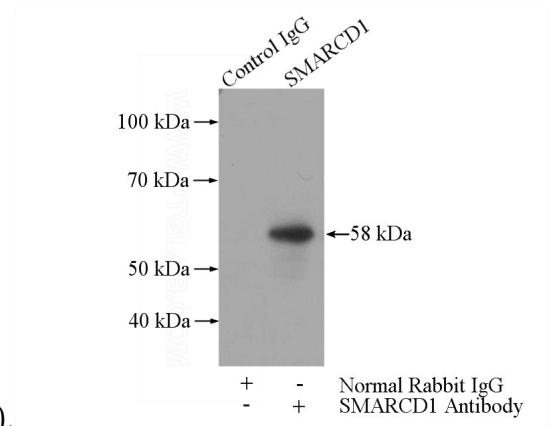
Recommended Dilution:

SMARCD1 antibody

Catalog Number: 115433



Immunofluorescent analysis of SH-SY5Y cells, using SMARCD1 antibody Catalog No:115433 at 1:50 dilution and FITC-labeled donkey anti-rabbit IgG(green). Blue pseudocolor = DAPI (fluorescent



DNA dye).

IP Result of anti-SMARCD1 (IP:Catalog No:115433, 3ug; Detection:Catalog No:115433 1:600) with mouse brain tissue lysate 4000ug.